

JOSEPH GILES



JOSEPH GILES



CH1012  
'Rolled And Hammered'  
Solid Brass Cabinet Handle

---

# CH1012 'Rolled And Hammered' Solid Brass Cabinet Handle

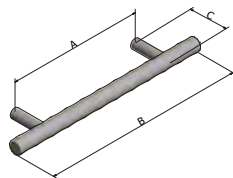
JOSEPH GILES

The Rolled and Hammered collection is created by hand, manually turning and hammering the metal to achieve this beautiful and tactile finish.

Over the last few years we have been designing and refining our cabinet ware; our designs conform to the typical cabinet handle shape, however, have beautiful embellishments on the tips to add interest. The rising popularity of these designs inspired the hammered and rolled design, as we asked; what else could be changed to achieve a completely different look? Various ideas were tried and tested over the years, some of which made it into our standard collections, however, the Rolled and Hammered range is a real showstopper. The pieces are crafted by true artisans, hammered and rolled using traditional blacksmith techniques in small forges. Each piece will have its own unique markings, which we believe only adds to its beauty and charm.

## Dimensions:

Code	A	B	C
CH1012.01	128mm	192mm	39mm
CH1012.02	192mm	256mm	39mm
CH1012.03	224mm	288mm	39mm



## Available Finishes:



Dark Bronze Waxed DBZW



Polished Bronze Waxed PBW



Polished Chrome PC



Polished Nickel PN



Brushed Brass Waxed BBW



Brushed Nickel BN



Mid Antique Brass Waxed MABW

## Related Products:



CP1100: 'Rolled & Hammered' Solid Brass Cabinet Pull



LV1047: 'Rolled And Hammered' Solid Brass Lever Handle



DP1055: 'Rolled And Hammered' Solid Brass Door Pull Handle

JOSEPH GILES



CH1036  
Solid Brass Hammered  
Cabinet Handle

---

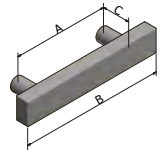
## CH1036 Solid Brass Hammered Cabinet Handle

These hammered cabinet handles are real showstoppers. Architects and interior designers alike will be impressed by the beautiful craftsmanship that gives this cabinet pull its unique flair. These statement pieces are highly desirable and can be found on some of the most exclusive projects in the world. Each piece has been lovingly made to perfection, using tooling applied by hand, no two are the same, which only adds to its charm.



### Dimensions:

Code	A	B	C
CH1036.03	80mm	120mm	30mm
CH1036.04	160mm	200mm	30mm



### Available Finishes:



*Dark Bronze Waxed DBZW*



*Polished Bronze Waxed PBW*



*Polished Chrome PC*



*Polished Nickel PN*



*Brushed Brass Waxed BBW*



*Brushed Nickel BN*



*Mid Antique Brass Waxed MABW*

### Related Products:



CH1082: Solid Brass Semi Circular Hammered Cabinet Handle



CP1014: Solid Brass Hammered Cabinet Pull



CH1067: Solid Brass Hammered Cabinet Handle

JOSEPH GILES



CH1048

‘Thurloe’ Solid Brass Cabinet Handle  
with Hand Stitched Bridle Leather

---

# CH1048 'Thurloe' Solid Brass Cabinet Handle with Hand Stitched Bridle Leather

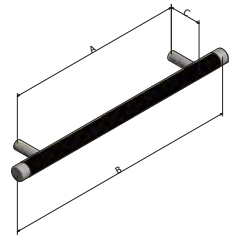
JOSEPH GILES

We often take inspiration from everyday items, and our Thurloe design is a classic example of this. As keen cyclists, we understand the importance of solid and comfortable handlebars. While modern bikes have come a long way in both performance and comfort, for us, vintage bicycles are the winners every time. Not simply for the nostalgia or the beautiful aesthetics, but because the experience is completely different and something to treasure.

The Thurloe was inspired by leather wrapped handlebars found on vintage bikes; the perfect marriage of beauty and practicality. The shape of the cabinet handle is tried and tested, but with the addition of leather wrapping elevates the piece to a new level of luxury and allows for a completely different experience. It was originally designed back in 2003 and is one of our first product designs. Today, it remains a popular choice for a range of design schemes.

## Dimensions:

Code	A	B	C
CH1048.01	128mm	192mm	39mm
CH1048.02	192mm	256mm	39mm
CH1048.03	224mm	288mm	39mm



## Available Finishes:



*Dark Bronze Waxed DBZW*



*Polished Bronze Waxed PBW*



*Polished Chrome PC*



*Polished Nickel PN*



*Brushed Brass Waxed BBW*



*Brushed Nickel BN*



*Mid Antique Brass Waxed MABW*

## Related Products:



CP1003: 'Thurloe' Solid Brass Cabinet Pull With Hand Stitched Bridle Leather



FT1030: Solid Brass Cabinet Handle Fixing Bolts in Decorative Finishes

JOSEPH GILES



CH1056  
'Theodore' Solid Brass  
Cabinet Handle

---



## CH1056

### 'Theodore' Solid Brass Cabinet Handle



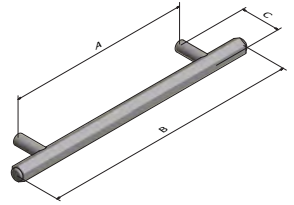
Our Theodore collection was inspired by a replica hexagonal pull handle that we produced for a historic public house in London. Parts of the building dated back to the 1900s and while much had changed during this time, the owners wanted to retain as many traditional accents of the building as possible while undertaking a major refurbishment. Inevitably some things were not able to be reused, and so new pieces that were sympathetic to the integrity of the building were introduced. Joseph Giles was tasked with designing large hexagonal door pulls which paid homage to its roots, but also complemented its new design scheme.

We loved the hexagonal design and felt it would suit a range of design projects. Over the months that followed, we experimented with the shape until we settled on the design, which we named Theodore. Its simplicity ensures all focus is on the shape, which is beautiful, tactile and practical.

The collection includes cabinet handles, lever handles, and more recently cabinet pulls.

#### Dimensions:

Code	A	B	C
CH1056.01	160mm	224mm	36mm
CH1056.02	224mm	288mm	36mm



#### Available Finishes:



*Dark Bronze Waxed DBZW*



*Polished Bronze Waxed PBW*



*Polished Chrome PC*



*Polished Nickel PN*



*Brushed Brass Waxed BBW*



*Brushed Nickel BN*



*Mid Antique Brass Waxed MABW*

#### Related Products:



CP1081: 'Theodore' Solid Brass Cabinet Pull



LV1060: 'Theodore' Solid Brass Lever Handle



LV1131: 'Theodore II' Solid Brass Lever Handle

JOSEPH GILES



CH1059  
'Harrison' Solid Brass  
Cabinet Handle

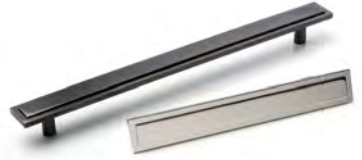
---

## CH1059

### 'Harrison' Solid Brass Cabinet Handle

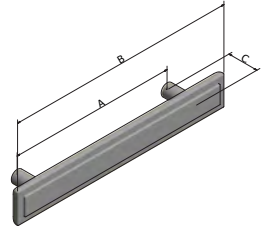
The Harrison range, which features an array of beautifully sturdy and elegant pieces, was first conceived out of a need for a modern deco style; an aesthetic that was in demand, but rare to source in the hardware industry at that time. The coveted contemporary art deco style persists to this day, and the Harrison range provides a solution for anyone seeking to add the exuberance of the deco era into their home but with a modern twist.

All of the range's items feature smooth, solid surfaces, with a gracefully-cut indentation, creating a textured ridge that is both tactile and attractive. Like the fine-tuning of a jazz solo, the Harrison range adds that perfect note into your space.



#### Dimensions:

Code	A	B	C
CH1059.01	160mm	220mm	33mm
CH1059.02	288mm	348mm	33mm



#### Available Finishes:



*Dark Bronze Waxed DBZW*



*Polished Bronze Waxed PBW*



*Polished Chrome PC*



*Polished Nickel PN*



*Brushed Brass Waxed BBW*



*Brushed Nickel BN*



*Mid Antique Brass Waxed MABW*

#### Related Products:



CP1101: 'Harrison' Solid Brass Cabinet Pull



DP1038: 'Harrison' Solid Brass Door Pull Handle



LV1105: 'Harrison' Solid Brass Lever Handle

JOSEPH GILES



# CH1075

## Knurled 'Montgomery' Solid Brass Cabinet Handle

---

# CH1075

## Knurled 'Montgomery' Solid Brass Cabinet Handle

JOSEPH GILES

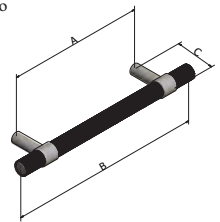
This collection began with the LV1108 lever handle, which was inspired by the bar and clasp design often found in jewellery, in which the bar loops through a circular clasp securing the item in place. This is emulated into the handle's design, which features the motif of a bar passing through a round form on the upper base of the handle. John Harwood, our veteran product designer and Director, added a special touch to the product – an indentation at the end, adding a tactile flourish.

Motorbikes inspired the knurled Montgomery design, applying a knurled texture to the classic design offers an entirely different look and experience. The piece mimics the texture found on biked handles which provides a firm grip and command on the road. Combining the classic elegance and the boldness, the knurled Montgomery offers the best of both worlds.

These cabinet items are a beautiful accent to any space; offering the prestige of one of our most popular designs. The handles would pair well with our other Montgomery products but are versatile enough to fit into a range of different design schemes seamlessly.

### Dimensions:

Code	A	B	C
CH1075.01	128mm	182mm	40mm
CH1075.02	192mm	246mm	40mm



### Available Finishes:



Dark Bronze Waxed DBZW



Polished Bronze Waxed PBW



Polished Chrome PC



Polished Nickel PN



Brushed Brass Waxed BBW



Brushed Nickel BN



Mid Antique Brass Waxed MABW

### Related Products:



LV1142: 'Knurled Montgomery'  
Solid Brass Lever Handle



CP1107: Knurled 'Montgomery'  
T-Bar Cabinet Pull

JOSEPH GILES



CH1076  
Knurled 'Ashworth'  
Solid Brass Cabinet Handle

---

# CH1076

## Knurled 'Ashworth' Solid Brass Cabinet Handle

# JOSEPH GILES

The Ashworth collection pays homage to the form and function of the Bauhaus movement. Walter Gropius, the founder of the movement, designed a door handle which epitomised 'Bauhaus' ideologies in the 1920s, and despite being almost 100 years old, remains a popular choice for architects and interior designers alike.

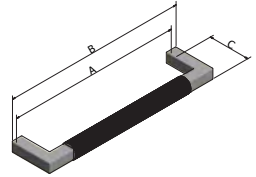
While there have been several replicas of this prestigious design over the years, Joseph Giles wanted to extend the concept further by experimenting with other products and textures. The result of which is the Ashworth collection. As the lever handle design was created by Gropius himself, we wanted to remain faithful to his concept. We have, however, made some aesthetic changes to bring it up to date with current trends, including tweaking the dimensions, materials and offering a variety of finishes.

The cabinet handles are a real triumph; we believe they capture the very essence of the movement, while at the same time evolving the design into other products, which is ideal for bringing a design scheme together. More recently, we have elevated the design further by adding a knurled texture, adding further interest and a more tactile experience. We first introduced this to a cabinet pull, which was followed by the cabinet handle; and we plan to roll out further products in this range.



### Dimensions:

Code	A	B	C
CH1076.01	160mm	170mm	41mm
CH1076.02	224mm	234mm	41mm



### Available Finishes:



*Dark Bronze Waxed DBZW*



*Polished Bronze Waxed PBW*



*Polished Chrome PC*



*Polished Nickel PN*



*Brushed Brass Waxed BBW*



*Brushed Nickel BN*



*Mid Antique Brass Waxed MABW*

### Related Products:



CP1108: 'Ashworth' Solid Brass Knurled Cabinet Pull

JOSEPH GILES



CH1079  
'Montgomery' Solid Brass  
Cabinet Handle

---



## CH1079

### 'Montgomery' Solid Brass Cabinet Handle

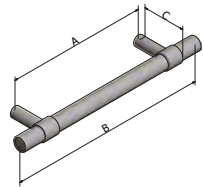
This handle is inspired by the bar and clasp design; often found on fine jewellery. The bar loops through a circular clasp, securing the item in place. This is emulated in the handle's design, which features the motif of a bar passing through a circular form on the upper base of the handle. John Harwood, our veteran product designer and director, added his special touch to the product, allowing an indentation at its end, which adds a real flourish to the piece. Once this prototype was formed, it was passed on to our unique workshops in Great Britain to manufacture it in its full glory. With such refined detail, it can fit into any design scheme seamlessly, subtly garnering attention for its beauty. Brushed brass is the most popular for this handle, but will look stunning in any of our finishes.

Finest grade solid brass cabinet handle from the Montgomery family. Made and finished by hand, these items come in two sizes and in all our loving and plated finishes.



#### Dimensions:

Code	A	B	C
CH1079.01	128mm	182mm	40mm
CH1079.02	192mm	246mm	40mm



#### Available Finishes:



*Dark Bronze Waxed DBZW*



*Polished Bronze Waxed PBW*



*Polished Chrome PC*



*Polished Nickel PN*



*Brushed Brass Waxed BBW*



*Brushed Nickel BN*



*Mid Antique Brass Waxed MABW*

#### Related Products:

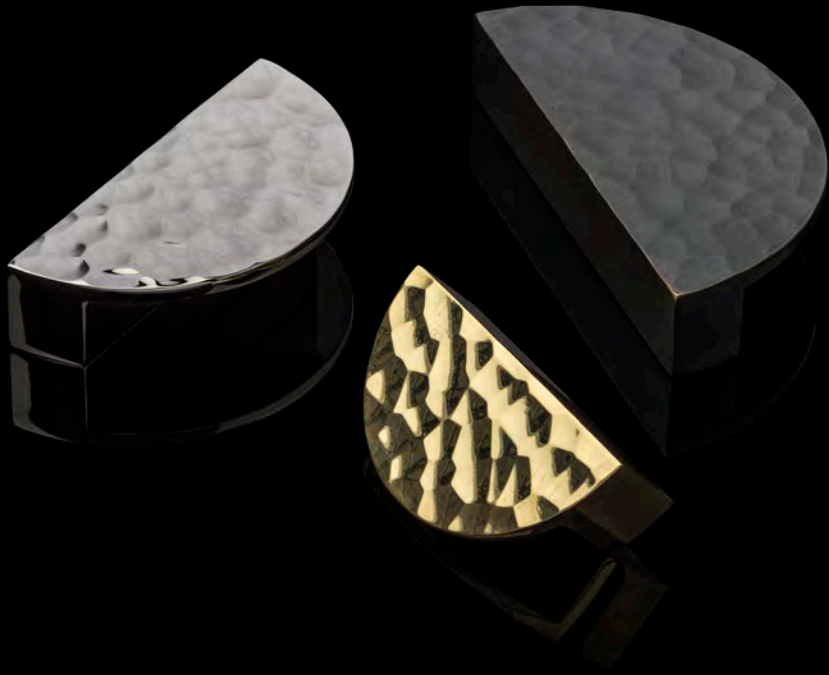


LV1108: 'Montgomery' Solid Brass Lever Handle



CP1111: 'Montgomery' Solid Brass T Bar Cabinet Pulls

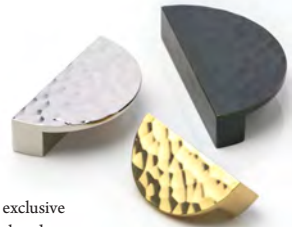
JOSEPH GILES



CH1082  
Solid Brass Semi Circular  
Hammered Cabinet Handle

---

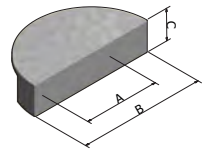
## CH1082 Solid Brass Semi Circular Hammered Cabinet Handle



The Semi-Circular Hammered Cabinet Handle is a showstopper. Architects and interior designers alike will be impressed by the beautiful craftsmanship that gives this handle its unique flair. These statement pieces are highly desirable and can be found on some of the most exclusive projects in the world. Each piece has been lovingly made to perfection, using tooling applied by hand no two are the same, which only adds to its charm.

### Dimensions:

Code	A	B	C
CH1082.01	50mm	80mm	25mm
CH1082.02	60mm	100mm	25mm
CH1082.03	80mm	120mm	25mm
CH1082.04	110mm	150mm	25mm



### Available Finishes:



*Dark Bronze Waxed DBZW*



*Polished Bronze Waxed PBW*



*Polished Chrome PC*



*Polished Nickel PN*



*Brushed Brass Waxed BBW*



*Brushed Nickel BN*



*Mid Antique Brass Waxed MABW*

### Related Products:



CP1014: Solid Brass Hammered Cabinet Pull



CH1036: Solid Brass Hammered Cabinet Handle



CH1067: Solid Brass Hammered Cabinet Handle

JOSEPH GILES



CP1011  
'Sloane' Solid Brass  
Swing Cabinet Pull

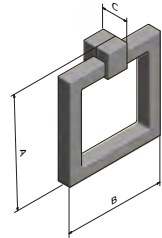
---

## CP1011

### 'Sloane' Solid Brass Swing Cabinet Pull

This handle, sleek in its square form and precise detailing, is the perfect accent to any cabinet. It comes in a variety of sizes, for a bold or subtler look, and is finished in a variety of fine metals.

The Sloane range was inspired by London's eponymous Sloane Square, located on the boundaries of the city's most prestigious districts: Knightsbridge, Belgravia and Chelsea. The standards and fine offerings of this square, which is small, but hugely influential, is what Joseph Giles sought to emulate in its Sloane range. Like the Square, this cabinet pull is a small detail that has a big impact on the design scheme of a space. Square in shape, this angular pull creates a fine grip and a sturdy base for years of use. Made from the finest grade solid brass, this pull certainly lives up to the luxury and panache of Sloane Square.



#### Dimensions:

Code	A	B	C
CP1011.01	50mm	50mm	16mm
CP1011.02	60mm	60mm	16mm
CP1011.03	70mm	70mm	16mm

#### Available Finishes:



*Dark Bronze Waxed DBZW*



*Polished Bronze Waxed PBW*



*Polished Chrome PC*



*Polished Nickel PN*



*Brushed Brass Waxed BBW*



*Brushed Nickel BN*



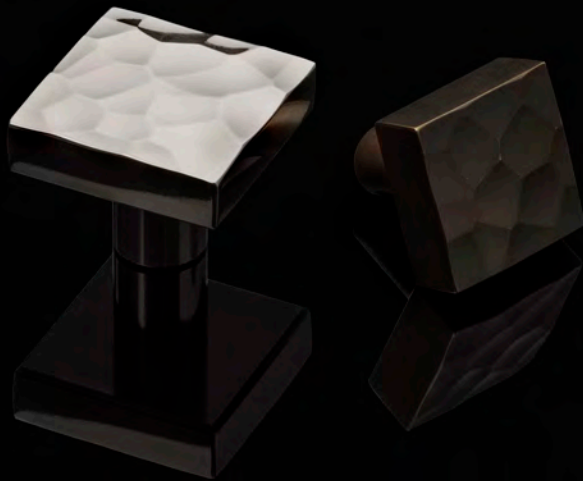
*Mid Antique Brass Waxed MABW*

#### Related Products:



FT1030: Solid Brass Cabinet Handle  
Fixing Bolts in Decorative Finishes

JOSEPH GILES



CP1014  
Solid Brass Hammered  
Cabinet Pull

---

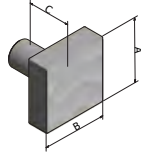
## CP1014 Solid Brass Hammered Cabinet Pull

The square Hammered cabinet pull is a showstopper. Architects and interior designers alike will be impressed by the beautiful craftsmanship that gives this cabinet pull its unique flair. These statement pieces are highly desirable and can be found on some of the most exclusive projects in the world. Each piece has been lovingly made to perfection, using tooling applied by hand, no two are the same, which only adds to its charm.



### Dimensions:

Code	A	B	C
CP1014.01	30mm	30mm	30mm
CP1014.02	40mm	40mm	30mm



### Available Finishes:



*Dark Bronze Waxed DBZW*



*Polished Bronze Waxed PBW*



*Polished Chrome PC*



*Polished Nickel PN*



*Brushed Brass Waxed BBW*



*Brushed Nickel BN*



*Mid Antique Brass Waxed MABW*

### Related Products:



CH1082: Solid Brass Semi Circular Hammered Cabinet Handle



CH1036: Solid Brass Hammered Cabinet Handle



CH1067: Solid Brass Hammered Cabinet Handle

JOSEPH GILES



CP1016  
'Clara' Solid Glass & Brass  
Cabinet Pull with Etched Rings

---



# CP1016

## 'Clara' Solid Glass & Brass

### Cabinet Pull with Etched Rings

JOSEPH GILES

The Georgian times were monumental in shaping Britain's history. It was an era revered for its artistic figures, such as John Keats, William Wordsworth and Jane Austen, and during a time that lay on the cusp of the industrial revolution; in which new technologies would burst forth and modernise society. Many design motifs have persisted from this era (and rightly so, as they are both practical as well as beautiful), such as the reeded motif often seen on ironmongery of this time.

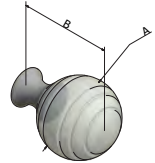
Joseph Giles loved this classic design and wanted to emulate it on other materials such as glass. The way in which this product is made is indeed a spectacle, the glass is shaped using specially designed tools, and the reeding is applied by hand while the glass is molten. The level of craftsmanship and skill that goes into the creation of a Joseph Giles product is unsurpassed, and this cabinet pull is a classic example of this.

The CP1016 is our homage to Georgian designs and allows one to bring a special lustre into their space.



#### Dimensions:

Code	A	B
CP1016.01	30mm	42mm



#### Available Finishes:



*Dark Bronze Waxed DBZW*



*Polished Bronze Waxed PBW*



*Polished Chrome PC*



*Polished Nickel PN*



*Brushed Brass Waxed BBW*



*Brushed Nickel BN*



*Mid Antique Brass Waxed MABW*

#### Related Products:



FT1030: Solid Brass Cabinet Handle  
Fixing Bolts in Decorative Finishes

JOSEPH GILES



CP1017  
'Clementine' Solid Glass  
& Brass Cabinet Pull

---

# CP1017 'Clementine' Solid Glass & Brass Cabinet Pull

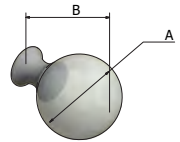
# JOSEPH GILES

The 'Clementine' was inspired by antique glass bottle stoppers, popular in the Victorian times for containing alcohol. A small, but important detail, the stopper would preserve the alcohol so that it wouldn't spoil when exposed to the air. The glass bulb at the tip of the stopper was a more elegant and delicate version of the traditional cork, making it popular with high-society individuals that were looking to impress dinner party guests. At Joseph Giles, we often take inspiration from antique products for our designs, yet we give them a modern facelift so that they may fit into both traditional and contemporary design schemes. Despite this, the elegance and beauty of glass is timeless; the Clementine being a true testament to this.



## Dimensions:

Code	A	B
CP1017.01	30mm	45mm
CP1017.02	40mm	55mm



## Available Finishes:



*Dark Bronze Waxed DBZW*



*Polished Bronze Waxed PBW*



*Polished Chrome PC*



*Polished Nickel PN*



*Brushed Brass Waxed BBW*



*Brushed Nickel BN*



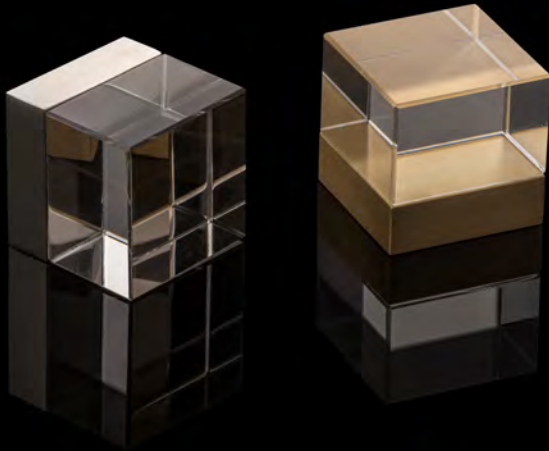
*Mid Antique Brass Waxed MABW*

## Related Products:



FT1030: Solid Brass Cabinet Handle  
Fixing Bolts in Decorative Finishes

JOSEPH GILES



CP1018  
'Cube' Solid Glass  
& Brass Cabinet Pull

---

# CP1018 'Cube' Solid Glass & Brass Cabinet Pull

JOSEPH GILES

The Cube range was conceptualised almost two decades ago with the EP1003 solid brass edge pull being the first which was swiftly followed by the EP1006; a larger version designed for bigger doors. The collection was designed and developed in response to a gap in the market for architects, who, at the time, couldn't find contemporary ironmongery that was both beautiful and practical to suit their design schemes.

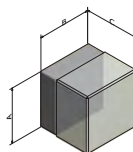
The Cube was one of our first major product designs, nothing like this had previously existed and its success gave us the confidence in our ability to design and experiment with different materials and styles. Whilst there have been many imitations of the Cube, we are proud to say that it is truly ours and is ingrained into our history.

The Cube remains one of our most popular products and is a testament to our understanding of classic contemporary design. Over the years the range expanded to include lever handles, cabinet pulls and the ever-popular edge pulls.



## Dimensions:

Code	A	B	C
CP1018.01	31mm	31mm	30mm



## Available Finishes:



*Dark Bronze Waxed DBZW*



*Polished Bronze Waxed PBW*



*Polished Chrome PC*



*Polished Nickel PN*



*Brushed Brass Waxed BBW*



*Brushed Nickel BN*



*Mid Antique Brass Waxed MABW*

## Related Products:



CP1028: 'Cube' Solid Brass Cabinet Pull



CH1008: 'Cube' Solid Brass Cabinet Handle

JOSEPH GILES



CP1019  
'Thomson' Solid Brass  
Cabinet Pull

---

## CP1019

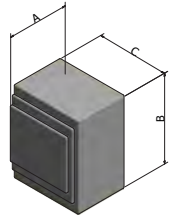
### 'Thomson' Solid Brass Cabinet Pull

Another impressive example of "furniture jewellery", the Thomson Solid Brass Cabinet Pull, complemented by its counterpart, the 'Thomson II', this cabinet pull is a fine example of art deco design. More restrained than its analogue, this pull nevertheless packs a punch with its luxurious heaviness and fabulous design, featuring layers of protruding square shapes on its face. Made from the finest grade brass, the ardour of the Jazz Era is felt in our parallel fervour and commitment to crafting beautiful products.



#### Dimensions:

Code	A	B	C
CP1019.01	27mm	40mm	32mm



#### Available Finishes:



*Dark Bronze Waxed DBZW*



*Polished Bronze Waxed PBW*



*Polished Chrome PC*



*Polished Nickel PN*



*Brushed Brass Waxed BBW*



*Brushed Nickel BN*



*Mid Antique Brass Waxed MABW*

#### Related Products:



CP1077: 'Thomson II' Solid Brass Cabinet Pull



FT1030: Solid Brass Cabinet Handle Fixing Bolts in Decorative Finishes

JOSEPH GILES



CP1055  
Organo  
Cabinet Pull

---



## CP1055

### Organo Cabinet Pull

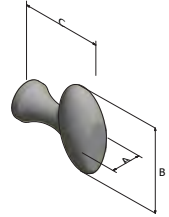
The ORGANO range is manufactured using traditional casting methods. As each piece is unique, there will be minor aesthetic variations and differences in porosity.

This range is available in four beautiful finishes, they are sold as single items and come with an M4 fixing bolt (FT1030).



#### Dimensions:

Code	A	B	C
CP1055.02	15mm	31mm	32mm



#### Available Finishes:



*Organo Old Sliver OOS*



*Organo Old Green OOG*



*Organo Light Bronze OLB*



*Organo Dark Bronze ODB*

#### Related Products:



CP1054: Organo Cabinet Pull



CH1007: 'Lenzi' Solid Bronze Organo Cabinet Handle



CH1027: Organo Solid Bronze Cabinet Handle

JOSEPH GILES



CP1056  
'Miriam' Solid Brass  
& Glass Cabinet Pull

---

## CP1056

### 'Miriam' Solid Brass & Glass Cabinet Pull

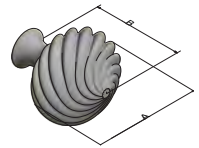
Looking to expand upon our glass offerings, we decided to experiment with traditional cast-iron shapes to create something delicate, yet unique. Out of this desire, the Miriam Cabinet Pull was created.

The beautiful shape of the pull's body is born out of a classic cast iron shape, which is elegant and textured, with a touch of whimsy. Similar to other famous shapes, such as the iconic roofs of the St. Basil's Cathedral in Russia, this experiment proved that we could create a shape out of glass that would resonate with any astute homeowner. The Miriam is ideal for a more delicate design scheme, as the lightness of glass works best with neutral colours and soft shapes.



#### Dimensions:

Code	A	B
CP1056.01	35mm	39mm



#### Available Finishes:



*Dark Bronze Waxed DBZW*



*Polished Bronze Waxed PBW*



*Polished Chrome PC*



*Polished Nickel PN*



*Brushed Brass Waxed BBW*



*Brushed Nickel BN*



*Mid Antique Brass Waxed MABW*

#### Related Products:



FT1030: Solid Brass Cabinet Handle  
Fixing Bolts in Decorative Finishes

JOSEPH GILES



CP1061  
'Enid' Solid Brass & Glass Pebble  
Cabinet Pull

---

# CP1061 'Enid' Solid Brass & Glass Pebble Cabinet Pull

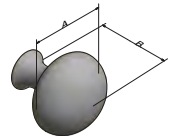
# JOSEPH GILES

The polished face of the Enid Cabinet Pull is evocative of a pebble found in a stream or brook; smoothed over years of being under the caress of rushing water. Its crystal form not only merges the two aesthetics of crystal-clear water and a pebble, but also lends it an elegance that will permeate in any design scheme. Inspired by nature, Enid brings the native beauty of the outdoors into the fore of the home or interior space. She is elegant, refined, but above all, naturally beautiful.



## Dimensions:

Code	A	B
CP1061.01	31mm	32mm



## Available Finishes:



*Dark Bronze Waxed DBZW*



*Polished Bronze Waxed PBW*



*Polished Chrome PC*



*Polished Nickel PN*



*Brushed Brass Waxed BBW*



*Brushed Nickel BN*



*Mid Antique Brass Waxed MABW*

## Related Products:



FT1030: Solid Brass Cabinet Handle  
Fixing Bolts in Decorative Finishes

JOSEPH GILES



CP1062  
'Florence' Solid Brass &  
Glass Cabinet Pull

---

# CP1062 'Florence' Solid Brass & Glass Cabinet Pull

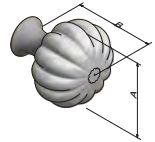
# JOSEPH GILES

After the success of the 'ENID' cabinet pulls, Joseph Giles developed a glass cabinet range that was more elaborate in shape. This beautiful design emulates the form of a flower, adding a delicate accent to any cabinet. The grooves on the handle's face allow for a tactile experience and its polished glass is wonderfully smooth to the touch. Simple, beautiful and tactile, this handle emanates sophistication and creates a space that is decidedly more glamorous.



## Dimensions:

Code	A	B
CP1062.01	32mm	34mm



## Available Finishes:



*Dark Bronze Waxed DBZW*



*Polished Bronze Waxed PBW*



*Polished Chrome PC*



*Polished Nickel PN*



*Brushed Brass Waxed BBW*



*Brushed Nickel BN*



*Mid Antique Brass Waxed MABW*

## Related Products:



FT1030: Solid Brass Cabinet Handle  
Fixing Bolts in Decorative Finishes

JOSEPH GILES



CP1064  
'Betsy' Solid Brass &  
Faceted Glass Cabinet Pull

---



# CP1064 'Betsy' Solid Brass & Faceted Glass Cabinet Pull

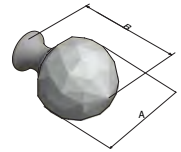
JOSEPH GILES

When it comes to a space, such as a home or a hotel, there are certain items of furniture that convey luxury. The chandelier is one such item, revered for its delicate crystal ornaments and layered tiers. The Betsy Cabinet Pull is inspired by the crystal baubles that lend the lamp its stunning countenance. The design of this pull allows for one to convey the luxury of the chandelier into other aspects of their space, such as their cabinets. Available in our range of finishes, the Betsy Pull is a piece to be admired.



## Dimensions:

Code	A	B
CP1064.01	30mm	40mm



## Available Finishes:



*Dark Bronze Waxed DBZW*



*Polished Bronze Waxed PBW*



*Polished Chrome PC*



*Polished Nickel PN*



*Brushed Brass Waxed BBW*



*Brushed Nickel BN*



*Mid Antique Brass Waxed MABW*

## Related Products:



FT1030: Solid Brass Cabinet Handle  
Fixing Bolts in Decorative Finishes

JOSEPH GILES



CP1067  
'Portia' Solid Brass &  
Faceted Glass Cabinet Pull

---

# CP1067 'Portia' Solid Brass & Faceted Glass Cabinet Pull

JOSEPH GILES

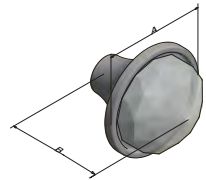
Diamonds are a girl's best friend, and in this case, glass can be too. This cabinet pull is designed to look like a sparkling piece of jewellery, adding the same glamour and elegance that a diamond ring would convey. The glass is set within solid brass, which not only provides a solid base for protection but also adds a smooth and tactile experience for the user.

This stunning cabinet pull was designed originally for bedrooms, however, with the versatility of glass and its timeless design, this would suit a range of rooms with a delicate and feminine design scheme.



## Dimensions:

Code	A	B
CP1067.01	25mm	23mm
CP1067.02	35mm	33mm
CP1067.03	45mm	42mm



## Available Finishes:



*Dark Bronze Waxed DBZW*



*Polished Bronze Waxed PBW*



*Polished Chrome PC*



*Polished Nickel PN*



*Brushed Brass Waxed BBW*



*Brushed Nickel BN*



*Mid Antique Brass Waxed MABW*

## Related Products:



FT1030: Solid Brass Cabinet Handle  
Fixing Bolts in Decorative Finishes

JOSEPH GILES



CP1082  
Fluted Solid Brass  
Drop Cabinet Pull

---

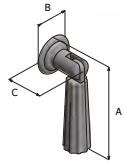
## CP1082 Fluted Solid Brass Drop Cabinet Pull

Ornate drop handles have been around for a long time; however, the tactile experience and function of a drop handle is a unique one, which adds its own special touch to a space. Therefore, Joseph Giles sought to revitalise this classic by designing it with a modern twist, and newer materials. The shape of the CP1082 is sleek and simple, and while it retains the fluted detail, the clean lines and fresh finishes give the whole piece a contemporary facelift. This is the modernist's answer to the traditional drop cabinet and will add a unique balance of tradition and innovation into your space.



### Dimensions:

Code	A	B	C
CP1082.02	40mm	20mm	19.5mm
CP1082.03	50mm	20mm	19.5mm



### Available Finishes:



*Dark Bronze Waxed DBZW*



*Polished Bronze Waxed PBW*



*Polished Chrome PC*



*Polished Nickel PN*



*Brushed Brass Waxed BBW*



*Brushed Nickel BN*



*Mid Antique Brass Waxed MABW*

### Related Products:

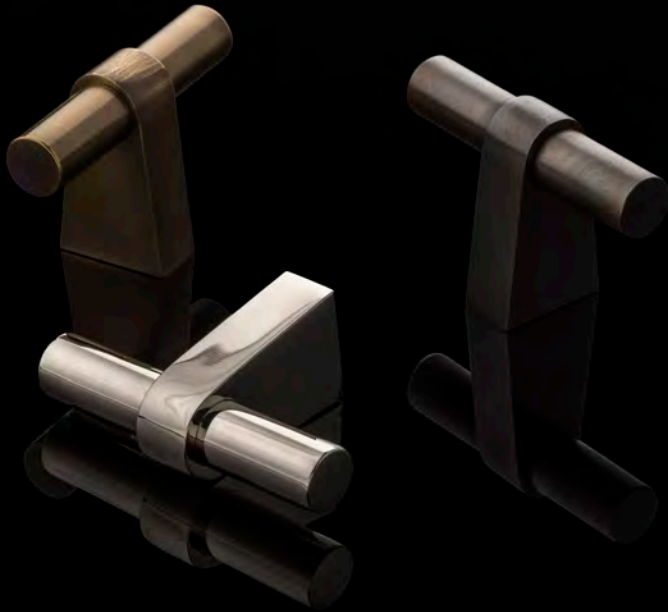


CP1083: Tapered Solid Brass Drop Cabinet Pull



FT1030: Solid Brass Cabinet Handle Fixing Bolts in Decorative Finishes

JOSEPH GILES



CP1096  
'Irvine' Solid Brass  
Cabinet Pull

---

## CP1096

### 'Irvine' Solid Brass Cabinet Pull

The Irvine range pays homage to Scotland and its roots in culture and design. Glasgow is the largest Scottish city and is home to the Scottish Opera, the Scottish Ballet and the famed Glasgow School of Art, where many great designers are formed.

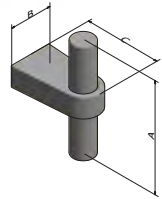
This collection follows the tradition of great design by having a unique rounded base and a smooth cylindrical pull.

The Irvine range, with its solid brass foundation and timeless design, is like a fine Scotch; it just gets better with age.



#### Dimensions:

Code	A	B	C
CP1096.01	49mm	19mm	34mm



#### Available Finishes:



*Dark Bronze Waxed DBZW*



*Polished Bronze Waxed PBW*



*Polished Chrome PC*



*Polished Nickel PN*



*Brushed Brass Waxed BBW*



*Brushed Nickel BN*



*Mid Antique Brass Waxed MABW*

#### Related Products:



CH1015: 'Irvine' Solid Brass Cabinet Handle



CH1050: 'Irvine' Solid Brass Cabinet Handle With Hand Stitched Bridle Leather



FT1030: Solid Brass Cabinet Handle Fixing Bolts in Decorative Finishes

JOSEPH GILES



CP1100  
'Rolled & Hammered'  
Solid Brass Cabinet Pull

---



# CP1100 'Rolled & Hammered' Solid Brass Cabinet Pull

JOSEPH GILES

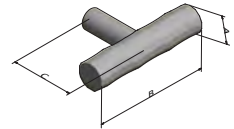
The Rolled and Hammered collection is created by hand, manually turning and hammering the metal to achieve this beautiful and tactile finish.

Over the last few years we have been designing and refining our cabinet ware; our designs conform to the typical cabinet handle shape, however, have beautiful embellishments on the tips to add interest. The rising popularity of these designs inspired the hammered and rolled design, as we asked; what else could be changed to achieve a completely different look? Various ideas were tried and tested over the years, some of which made it into our standard collections, however, the Rolled and Hammered range is a real showstopper. The pieces are crafted by true artisans, hammered and rolled using traditional blacksmith techniques in small forges. Each piece will have its unique markings, which we believe only adds to its beauty and charm.



## Dimensions:

Code	A	B	C
CP1100.01	13mm	55mm	34mm



## Available Finishes:



*Dark Bronze Waxed DBZW*



*Polished Bronze Waxed PBW*



*Polished Chrome PC*



*Polished Nickel PN*



*Brushed Brass Waxed BBW*



*Brushed Nickel BN*



*Mid Antique Brass Waxed MABW*

## Related Products:



CH1012: 'Rolled & Hammered'  
Solid Brass Cabinet Handle



LV1047: 'Rolled & Hammered'  
Solid Brass Lever Handle



DP1055: 'Rolled & Hammered'  
Solid Brass Door Pull Handle

JOSEPH GILES



CP1103  
'Jude' Solid Brass  
Cabinet Pull

---

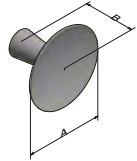
## CP1103 'Jude' Solid Brass Cabinet Pull

The inspiration for this Jude cabinet pull came from an aluminium cabinet handle that was widely used in the 1960s. We have re-created a piece that adorned many items of furniture in that time and can still be found in some homes today. Our design is a slimmer more delicate and balanced version that has been crafted from solid brass and available in our living and plated finishes.



### Dimensions:

Code	A	B
CP1103.01	30mm	20mm
CP1103.02	50mm	25mm



### Available Finishes:



*Dark Bronze Waxed DBZW*



*Polished Bronze Waxed PBW*



*Polished Chrome PC*



*Polished Nickel PN*



*Brushed Brass Waxed BBW*



*Brushed Nickel BN*



*Mid Antique Brass Waxed MABW*

### Related Products:



FT1030: Solid Brass Cabinet Handle  
Fixing Bolts in Decorative Finishes

JOSEPH GILES



# CP1105

## 'Collett Zarzycki' T-Bar Solid Brass & Marble Cabinet Pull

---

# CP1105 'Collett Zarzycki' T-Bar Solid Brass & Marble Cabinet Pull

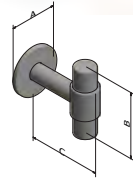
JOSEPH GILES

This exquisite cabinet pull is part of a design collaboration with leading interior designers Collett Zarzycki. It is made using the finest Italian marbles including Black and Gold Portoro, White Onyx, Red Laguna and Green Guatemala. The marble is secured in place using solid brass, which is available in all our signature finishes.

Please be advised that as natural products, each piece will carry unique markings and subtle colour differences, which we believe adds to the charm and delight of the material.

## Dimensions:

Code	A	B	C
CP1105.01	32mm	50mm	40mm
CP1105.02	42mm	60mm	65mm
CP1105.03	52mm	74mm	80mm



## Available Finishes:



*Dark Bronze Waxed DBZW*



*Polished Bronze Waxed PBW*



*Polished Chrome PC*



*Polished Nickel PN*



*Brushed Brass Waxed BBW*



*Brushed Nickel BN*



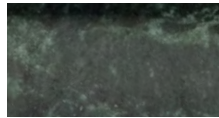
*Mid Antique Brass Waxed MABW*



*Black and Gold Portoro BPM*



*White Onyx WOM*



*Green Guatemala GGM*



*Red Laguna RLM*

## Related Products:



LV1096: 'Collett Zarzycki' Solid Brass & Marble Lever Handle



DP1050: 'Collett Zarzycki' Solid Brass & Marble Cranked Door Pull

JOSEPH GILES



CP1107

'Montgomery' Solid Brass  
Cabinet Pull with Knurling Detail

---

# CP1107

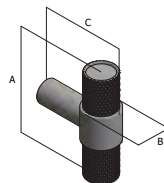
## 'Montgomery' Solid Brass Cabinet Pull with Knurling Detail

JOSEPH GILES

The addition of this T-bar cabinet pull adds to our Knurled Montgomery collection. The first product featuring this design was the LV1142 lever handle, which was swiftly followed by the CH1075 and now this tactile cabinet pull.

With meticulous attention to the smallest details, such as the knurled texture, this handle lends a carefully considered yet wonderfully understated feel to contemporary schemes.

The Knurled Montgomery collection was inspired by motorbike handles. The knurling provides a texture and appearance that mimics the one found on a bike handle which provides a firm grip and command of the road. Following the success of the lever handle, we wanted to create matching cabinet ware to offer the full package for a design scheme.



### Dimensions:

Code	A	B	C
CP1107.01	44mm	15mm	35mm

### Available Finishes:



*Dark Bronze Waxed DBZW*



*Polished Bronze Waxed PBW*



*Polished Chrome PC*



*Polished Nickel PN*



*Brushed Brass Waxed BBW*



*Brushed Nickel BN*



*Mid Antique Brass Waxed MABW*

### Related Products:



LV1142: 'Montgomery' Solid Brass Lever Handle with Knurling Detail



CH1075: 'Montgomery' Solid Brass Cabinet Handle with Knurling Detail

JOSEPH GILES



CP1108  
'Ashworth' Solid Brass  
Knurled Cabinet Pull

---



# CP1108

## 'Ashworth' Solid Brass Knurled Cabinet Pull

# JOSEPH GILES

The Ashworth collection pays homage to the form and function of the Bauhaus movement. Walter Gropius, the founder of the movement, designed a door handle which epitomised 'Bauhaus' ideologies in the 1920s, and despite being almost 100 years old, remains a popular choice for architects and interiors designers alike.

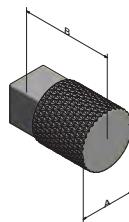
While there have been several replicas of this prestigious design over the years, Joseph Giles wanted to extend the concept further by experimenting with other products and textures. The result of which is the Ashworth collection. As the lever handle design was created by Gropius himself, we wanted to remain faithful to his concept. We have, however, made some aesthetic changes to bring it up to date with current trends, including tweaking the dimensions, materials and offering a variety of finishes.

The cabinet handles are a real triumph; we believe they capture the very essence of the movement, while at the same time evolving the design into other products, which is ideal for bringing a design scheme together. More recently, we have elevated the design further by adding a knurled texture, adding further interest and a more tactile experience. We first introduced this to a cabinet pull, which was followed by the cabinet handle; and we plan to roll out further products in this range.



### Dimensions:

Code	A	B
CP1108.01	20mm	32mm
CP1108.02	29mm	44mm



### Available Finishes:



*Dark Bronze Waxed DBZW*



*Polished Bronze Waxed PBW*



*Polished Chrome PC*



*Polished Nickel PN*



*Brushed Brass Waxed BBW*



*Brushed Nickel BN*



*Mid Antique Brass Waxed MABW*

### Related Products:



CH1076: Knurled 'Ashworth'  
Solid Brass Cabinet Handle

JOSEPH GILES



CP1109  
Solid Brass Knurled  
Cabinet Pull

---

## CP1109

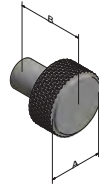
### Solid Brass Knurled Cabinet Pull

Nowadays, with the newest technology emerging in hardware, items are often made using state of the art machinery, for both its efficiencies and precision finish. However, there's something to be said about the appeal of the vintage tools of yesteryears; such as the ones you might still find in old toolboxes at the back of the shed. Tools such as the pocket scriber, pin vice and tap wrench are used to create small, yet important functions, during construction processes. For example, the pocket scriber helps guide a saw by creating indentations on the wood and a pin vice is a miniature drill perfect for working with small details. Although these tools are still used today, their appearance has changed, and they have become noticeably sleeker. However, being a company devoted not only to traditional crafting methods, but to the process of allowing small details to have a large impact, we thought it appropriate to design the CP1109 in the spirit of the vintage versions of small, but useful tools. The beautifully textured sides of the cabinet pull's handles are reminiscent of the one found on a scriber or pin vice; which allows for a functional grip as well as beauty. The solid brass form ensures a lifetime of use, and like these tools will go the distance in crafting your perfect space.



#### Dimensions:

Code	A	B
CP1109.01	25mm	28mm
CP1109.02	36mm	36mm



#### Available Finishes:



*Dark Bronze Waxed DBZW*



*Polished Bronze Waxed PBW*



*Polished Chrome PC*



*Polished Nickel PN*



*Brushed Brass Waxed BBW*



*Brushed Nickel BN*



*Mid Antique Brass Waxed MABW*

#### Related Products:



FT1030: Solid Brass Cabinet Handle  
Fixing Bolts in Decorative Finishes

JOSEPH GILES



CP1110  
'Volume' Solid Brass  
Knurled Cabinet Pull

---

## CP1110

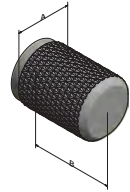
### 'Volume' Solid Brass Knurled Cabinet Pull

The amp: Britain's symbol for an illustrious history of music. The modern music amp became widespread in the 1970s; a platform to turn up the sound of British legends like The Beatles, Pink Floyd and Led Zeppelin among many others. The amp was a gateway to expression, to allow music to speak vicariously through each listener's emotions through the record player. In this spirit, the Volume Brass Knurled Cabinet Pull seeks to add this element of self-expression into your home by emulating an amp dial and its wonderful texture. With a high volume, this robust, but compact, cabinet pull is perfect for anyone wishing to elevate their space above and beyond any standard.



#### Dimensions:

Code	A	B
CP1110.01	20mm	28mm
CP1110.02	29mm	35mm



#### Available Finishes:



*Dark Bronze Waxed DBZW*



*Polished Bronze Waxed PBW*



*Polished Chrome PC*



*Polished Nickel PN*



*Brushed Brass Waxed BBW*



*Brushed Nickel BN*



*Mid Antique Brass Waxed MABW*

#### Related Products:



FT1030: Solid Brass Cabinet Handle  
Fixing Bolts in Decorative Finishes

JOSEPH GILES



# CP1111

## 'Montgomery' Solid Brass T Bar Cabinet Pulls

---

# CP1111

## 'Montgomery' Solid Brass

### T Bar Cabinet Pulls

JOSEPH GILES



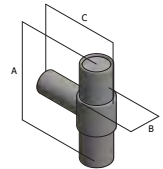
This cabinet pull is inspired by the bar and clasp design; often found on fine jewellery. The bar loops through a circular clasp, securing the item in place. This is emulated in the design, which features the motif of a bar passing through a circular form. John Harwood, our veteran product designer and director, added his own special touch to the design, allowing an indentation at its end, which adds a real flourish to the piece.

This design was originally created for a lever handle and the T-bar cabinet pull followed. With such refined detail, it can fit into any design scheme seamlessly, subtly garnering attention for its beauty.

The 'Montgomery' cabinet pulls are made from the finest grade solid brass and are available in a range of finishes.

#### Dimensions:

Code	A	B	C
CP1111.01	44mm	15mm	35mm



#### Available Finishes:



*Dark Bronze Waxed DBZW*



*Polished Bronze Waxed PBW*



*Polished Chrome PC*



*Polished Nickel PN*



*Brushed Brass Waxed BBW*



*Brushed Nickel BN*



*Mid Antique Brass Waxed MABW*

#### Related Products:



LV1108: 'Montgomery' Solid Brass  
Lever Handle



CH1079: 'Montgomery' Solid Brass  
Cabinet Handle

JOSEPH GILES



CP1120  
'Theodore' Solid Brass  
T-Bar Cabinet Pull

---



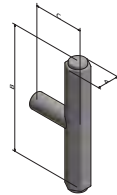
## CP1120

### 'Theodore' Solid Brass T-Bar Cabinet Pull

Our Theodore collection was inspired by a replica hexagonal pull handle that we produced for a historic public house in London. Parts of the building dated back to the 1900s and while much had changed during this time, the owners wanted to retain as many traditional accents of the building as possible while undertaking a major refurbishment. Inevitably some things were not able to be reused, and so new pieces were required which were sympathetic to the integrity of the building. Joseph Giles was tasked with designing large hexagonal door pulls which paid homage to its roots, but also complemented its new design scheme.

We loved the hexagonal design and felt it would suit a range of design projects. Over the months that followed, we experimented with the shape until we settled on the design; which we named Theodore. Its simplicity ensures all focus is on the shape, which is beautiful, tactile and practical.

The collection includes cabinet handles, lever handles, and more recently cabinet pulls.



#### Dimensions:

Code	A	B	C
CP1120.01	12mm	79mm	36mm

#### Available Finishes:



*Dark Bronze Waxed DBZW*



*Polished Bronze Waxed PBW*



*Polished Chrome PC*



*Polished Nickel PN*



*Brushed Brass Waxed BBW*



*Brushed Nickel BN*



*Mid Antique Brass Waxed MABW*

#### Related Products:



DP1057: 'Theodore' Solid Brass Door Pull Handle



LV1060: 'Theodore' Solid Brass Lever Handle



CP1081: 'Theodore' Solid Brass Cabinet Pull

JOSEPH GILES



CP1131  
'Dewhurst II' Solid Brass  
Cabinet Pull

---

## CP1131

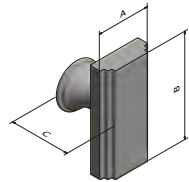
### 'Dewhurst II' Solid Brass Cabinet Pull

The Dewhurst Range is inspired by the glitz and glamour of Manhattan circa the 1920s, when art deco reigned. We wanted to capture the extravagance of a fizzing bottle of champagne, the blaring sound of a saxophone, or a beautiful beaded flapper dress, and condense it into fine design that evokes nostalgia. And so, as a member of this range, the Dewhurst cabinet pull follows suit. With art deco motifs, such as the cascading solid brass that creates texture and aesthetic, and the beautiful stem it rests on, this cabinet pull creates harmony in your space similar to the melody of a jazz song. Bold and refined, this piece is perfect for creating a statement that will hit all the right notes in your home.



#### Dimensions:

Code	A	B	C
CP1131.01	26mm	50mm	30mm



#### Available Finishes:



*Dark Bronze Waxed DBZW*



*Polished Bronze Waxed PBW*



*Polished Chrome PC*



*Polished Nickel PN*



*Brushed Brass Waxed BBW*



*Brushed Nickel BN*



*Mid Antique Brass Waxed MABW*

#### Related Products:



LV1052: 'Dewhurst' Solid Brass Lever Handle



DP1019: 'Dewhurst' Solid Brass Door Pull Handle



SF1013: 'Dewhurst' Solid Brass Recessed Pull

JOSEPH GILES



## ‘Collett Zarzycki’ for Joseph Giles

---

Australia: THE ENGLISH TAPWARE COMPANY | 1300 01 81 61 | [www.englishtapware.com.au](http://www.englishtapware.com.au)  
New Zealand: IN RESIDENCE | 09 309 3023 | [www.inres.co.nz](http://www.inres.co.nz)

Collett-Zarzycki, a respected London architecture practice, and Joseph Giles, leading designers and manufacturers of luxury architectural ironmongery, partnered to create a stunning range of marble door and cabinet furniture for super prime developments.

The range which features the finest Italian marbles including White Onyx, Green Guatemala, Red Laguna and Black and Gold Portoro provide the jewel-like finishing touches for the ultimate in luxury design schemes. The range includes a door pull, a lever handle and a selection of cabinet pulls. Many of the pieces have a cylindrical marble shaft, with minimalistic metal fixtures to ensure the marble remains the focal point.

As champions of classic contemporary style, Collett-Zarzycki delved into carefully curated design references for inspiration, such as the beautiful opulence of the 1930s. From this, the design team envisioned this collection of ironmongery perfectly adorning and cohering with the buildings of the pioneer architects/designers of the period, such as Jose Plecnik and Adolf Loos.

Joseph Giles understood their design idea and explored the possibilities to bring their vision to life. This was particularly challenging as marbles are delicate materials to work with both for shaping and finishing, but also when used in their finished form.

Please be advised that as natural products, each piece will carry unique markings and subtle colour differences, which we believe adds to the charm and delight of the material.

## Available Finishes:



*Dark Bronze Waxed DBZW*



*Polished Bronze Waxed PBW*



*Polished Chrome PC*



*Polished Nickel PN*



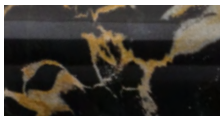
*Brushed Brass Waxed BBW*



*Brushed Nickel BN*



*Mid Antique Brass Waxed MABW*



*Black and Gold Portoro BPM*



*White Onyx WOM*



*Green Guatemala GGM*



*Red Laguna RLM*

## Products in this family:



DP1050: 'Collett Zarzycki' Solid Brass and Marble Cranked Door Pull



LV1096: 'Collett Zarzycki' Solid Brass & Marble Lever Handle



CP1105: 'Collett Zarzycki' T-Bar Solid Brass & Marble Cabinet Pull

JOSEPH GILES



DK1037  
Intricately Hammered Solid  
Brass Oval Door Knob

---

# DK1037

## Intricately Hammered Solid Brass

### Oval Door Knob

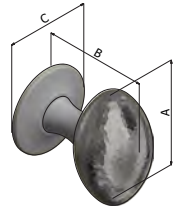
JOSEPH GILES

The DK1037 is a product that marries contradictions; specifically in our “old meets new” sensibility. Joseph Giles prides itself on adhering to traditional designs and methods of production, but, at the same time, embraces what modernity in design has to offer. And so, the DK1037 was made; a product that retains a traditional doorknob shape, with a modern texture to add serious interest. The texture of the DK1037 is achieved through meticulous hammering in order to render it not only visually eclectic but also tactilely. With such an interesting combination, the doorknob fits into any design space, whether traditional or modern.



#### Dimensions:

Code	A	B	C
DK1037.01	73mm	74mm	54mm



#### Available Finishes:



Dark Bronze Waxed DBZW



Polished Bronze Waxed PBW



Polished Chrome PC



Polished Nickel PN



Brushed Brass Waxed BBW



Brushed Nickel BN



Mid Antique Brass Waxed MABW

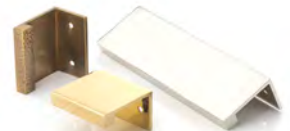
#### Related Products:



CH1082: Solid Brass Semi Circular Hammered Cabinet Handle



CP1014: Solid Brass Hammered Cabinet Pull



EP1012: 'Cube' Solid Brass Small Edge Pull With Intricately Hammered Texture

JOSEPH GILES



DP1007  
'Davis' Door  
Pull Handle

---



## DP1007

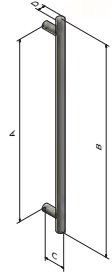
### 'Davis' Door Pull Handle

The 'Davis' door pull handles are made from the finest grade solid brass and are available in all our signature finishes. They come with a 10-year mechanical guarantee and are supplied for either glass or timber doors, and sold as individually for single side application or as a pair for back to back applications.

This product is available in three fixing options, which are **Bolt Through** (1 handle), **Secret Fix** (1 handle) and **Back to Back** (2 handles).

#### Dimensions:

Code	A	B	C	D
DP1007.04	300mm	400mm	64mm	19mm
DP1007.06	600mm	700mm	64mm	19mm
DP1007.08	600mm	700mm	70mm	25mm
DP1007.09	1000mm	1100mm	70mm	25mm
DP1007.11	1200mm	1300mm	77mm	32mm



#### Available Finishes:



*Dark Bronze Waxed DBZW*



*Polished Bronze Waxed PBW*



*Polished Chrome PC*



*Polished Nickel PN*



*Brushed Brass Waxed BBW*



*Brushed Nickel BN*



*Mid Antique Brass Waxed MABW*

#### Related Products:



PP1001: Solid Stainless And Brass Push Plates

JOSEPH GILES



DP1012  
'Zelda' Solid Brass  
Door Pull Handle

---

# DP1012

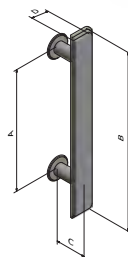
## 'Zelda' Solid Brass Door Pull Handle

JOSEPH GILES

Another beautiful art deco inspired piece; the Zelda is a must-have for any discerning homeowner. Named after Zelda Fitzgerald, wife of Great Gatsby writer F. Scott Fitzgerald, Zelda was an icon in her own right. Largely considered as the first American flapper, Zelda was prolific in dance and acclaimed for her beauty. Like a 1930s dancer, this handle has movement, seen in its cascading ridges at the edges of the handle. Stepped on a round rose, this fluidity continues at every angle, making for a graceful and harmonious product. Add an essence of Zelda's legendary beauty into your project, and witness the art deco magic that ensues.

The 'Zelda' door pull handles are made from finest grade solid brass and are available in all our signature finishes. They come with a 10-year mechanical guarantee and are supplied for either glass or timber doors, and sold individually for single side application or as a pair for back to back applications.

This product is available in three fixing options, which are **Bolt Through** (1 handle), **Secret Fix** (1 handle) and **Back to Back** (2 handles).



### Dimensions:

Code	A	B	C	D
DP1012.01	200mm	300mm	54mm	38mm
DP1012.02	450mm	550mm	54mm	38mm

### Available Finishes:



*Dark Bronze Waxed DBZW*



*Polished Bronze Waxed PBW*



*Polished Chrome PC*



*Polished Nickel PN*



*Brushed Brass Waxed BBW*



*Brushed Nickel BN*



*Mid Antique Brass Waxed MABW*

### Related Products:



PP1001: Solid Stainless and Brass Push Plates

JOSEPH GILES



DP1019  
'Dewhurst' Solid Brass  
Door Pull Handle

---

# DP1019 'Dewhurst' Solid Brass Door Pull Handle

JOSEPH GILES

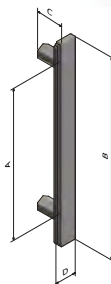
The Dewhurst Range is inspired by the glitz and glamour of Manhattan circa the 1920s, when art deco reigned. We wanted to capture the extravagance of a fizzing bottle of champagne, the blaring sound of a saxophone, or a beautiful beaded flapper dress, and condense it into fine design that evokes nostalgia. And so, as a member of this range, the Dewhurst door pull handle follows suit. With art deco motifs, such as the cascading solid brass that creates texture and aesthetic, and the beautiful stems it rests on, the pull handle creates harmony in your space similar to the melody of a jazz song. Bold and refined, this piece is perfect for creating a statement that will hit all the right notes in your home.

The 'Dewhurst' door pull handles are made from finest grade solid brass and are available in all our signature finishes. They come with a 10-year mechanical guarantee and are supplied for either glass or timber doors, and sold as individually for single side application or as a pair for back to back applications.

This product is available in three fixing options, which are **Bolt Through** (1 handle), **Secret Fix** (1 handle) and **Back to Back** (2 handles).

## Dimensions:

Code	A	B	C	D
DP1019.01	300mm	400mm	58mm	44mm



## Available Finishes:



*Dark Bronze Waxed DBZW*



*Polished Bronze Waxed PBW*



*Polished Chrome PC*



*Polished Nickel PN*



*Brushed Brass Waxed BBW*



*Brushed Nickel BN*



*Mid Antique Brass Waxed MABW*

## Related Products:



LV1052: 'Dewhurst' Solid Brass  
Lever Handle



CP1131: 'Dewhurst II' Solid Brass  
Cabinet Pull



SF1013: 'Dewhurst' Solid Brass  
Recessed Pull

JOSEPH GILES



DP1038  
'Harrison' Solid Brass  
Door Pull Handle

---

# DP1038 'Harrison' Solid Brass Door Pull Handle

# JOSEPH GILES

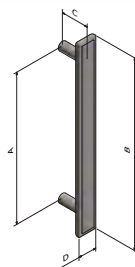
The Harrison range, which features an array of beautifully sturdy and elegant pieces, was first conceived out of a need for a modern deco style; an aesthetic that was in demand, but rare to source in the hardware industry at that time. The coveted contemporary Art Deco style persists to this day, and the Harrison range provides a solution for anyone seeking to add the exuberance of the deco era into their home but with a modern twist. All of the range's items feature smooth, solid surfaces, with a gracefully-cut indentation, creating a textured ridge that is both tactile and attractive. Like the fine-tuning of a jazz solo, the Harrison range adds that perfect note into your space.

The 'Harrison' door pull handles are made from finest grade solid brass and are available in all our signature finishes. They come with a 10-year mechanical guarantee and are supplied for either glass or timber doors, and sold individually for single side application or as a pair for back to back applications.

This product is available in three fixing options, which are **Bolt Through** (1 handle), **Secret Fix** (1 handle) and **Back to Back** (2 handles).

## Dimensions:

Code	A	B	C	D
DP1038.01	300mm	380mm	60mm	38mm
DP1038.02	600mm	680mm	60mm	38mm



## Available Finishes:



Dark Bronze Waxed DBZW



Polished Bronze Waxed PBW



Polished Chrome PC



Polished Nickel PN



Brushed Brass Waxed BBW



Brushed Nickel BN



Mid Antique Brass Waxed MABW

## Related Products:



LV1105: 'Harrison' Solid Brass  
Lever Handle



CP1101: 'Harrison' Solid Brass  
Cabinet Pull



CH1059: 'Harrison' Solid Brass  
Cabinet Handle

JOSEPH GILES



DP1050  
'Collett Zarzycki' Solid Brass  
& Marble Cranked Door Pull

---



# DP1050

## 'Collett Zarzycki' Solid Brass & Marble Cranked Door Pull

JOSEPH GILES

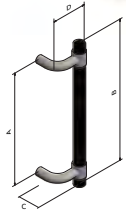


This exquisite cranked door pull is part of a design collaboration with leading interior designers Collett Zarzycki. It is made using the finest Italian marbles including black and gold Portoro, White Onyx, Red Laguna and Green Guatemala. The marble is secured in place using solid brass, which is available in all our signature finishes. They come with a 10-year mechanical guarantee and are supplied for either glass or timber doors, and sold individually for single side application or as a pair for back to back applications.

This product is available in three fixing options, which are **Bolt Through** (1 handle), **Secret Fix** (1 handle) and **Back to Back** (2 handles).

### Dimensions:

Code	A	B	C	D
DP1050.01	270mm	340mm	66mm	84mm



### Available Finishes:



Dark Bronze Waxed DBZW



Polished Bronze Waxed PBW



Polished Chrome PC



Polished Nickel PN



Brushed Brass Waxed BBW



Brushed Nickel BN



Mid Antique Brass Waxed MABW



Black and Gold Portoro BPM



White Onyx WOM



Green Guatemala GGM



Red Laguna RLM

### Related Products:



LV1096: 'Collett Zarzycki' Solid Brass & Marble Lever Handle



CP1105: 'Collett Zarzycki' T-Bar Solid Brass & Marble Cabinet Pull

JOSEPH GILES



DP1056  
'Bartlett' Solid Brass  
Door Pull Handle

---

# DP1056 'Bartlett' Solid Brass Door Pull Handle

JOSEPH GILES

The Bartlett family, sharing the same name as the famed Bartlett School of Architecture in London's University College London, was crafted with attention to architecture, fusing traditional concentric patterns with a contemporary cylindrical design. Joseph Giles understands the necessary marrying of form and function, and with this knowledge, created this collection.

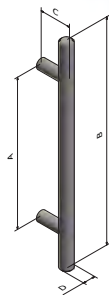
The simple geometry of concentric circles and clean lines are the hallmark of the Bartlett family. The contemporary design will co-ordinate effortlessly across a space for a pleasing, modern aesthetic, with subtle nods to traditional design classics. The beauty of this design is that individual pieces will stand out on their own, or you can combine the collection for a holistic scheme.

The 'Bartlett' door pull handles are made from the finest grade solid brass and are available in all our signature finishes. They come with a 10-year mechanical guarantee and are supplied for either glass or timber doors, and sold individually for single side application or as a pair for back to back applications.

This product is available in three fixing options, which are **Bolt Through** (1 handle), **Secret Fix** (1 handle) and **Back to Back** (2 handles).

## Dimensions:

Code	A	B	C	D
DP1056.01	300mm	450mm	70mm	25mm



## Available Finishes:



Dark Bronze Waxed DBZW



Polished Bronze Waxed PBW



Polished Chrome PC



Polished Nickel PN



Brushed Brass Waxed BBW



Brushed Nickel BN

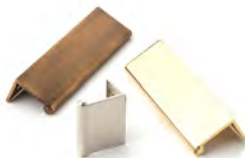


Mid Antique Brass Waxed MABW

## Related Products:



CP1004: 'Bartlett' Solid Brass Cabinet Pull



EP1001: 'Bartlett' Solid Brass Small Round Edge Pull



LV1058: 'Bartlett' Solid Brass Lever Handle

JOSEPH GILES



DP1058  
'Ashworth' Solid Brass  
Door Pull Handle

---

# DP1058 'Ashworth' Solid Brass Door Pull Handle

JOSEPH GILES

The Ashworth collection pays homage to the form and function of the Bauhaus movement. Walter Gropius, the founder of the movement, designed a door handle which epitomised 'Bauhaus' ideologies in the 1920s, and despite being almost 100 years old, remains a popular choice for architects and interior designers alike.

While there have been several replicas of this prestigious design over the years, Joseph Giles wanted to extend the concept further by experimenting with other products and textures. The result of which is the Ashworth collection. As the lever handle design was created by Gropius himself, we wanted to remain faithful to his concept. We have, however, made some aesthetic changes to bring it up to date with current trends, including tweaking the dimensions, materials and offering a variety of finishes.

The cabinet handles are a real triumph; we believe they capture the very essence of the movement, while at the same time evolving the design into other products, which is ideal for bringing a design scheme together. More recently we have added door pulls to this collection.

This product is available in three fixing options, which are **Bolt Through** (1 handle), **Secret Fix** (1 handle) and **Back to Back** (2 handles).

## Dimensions:

Code	A	B	C	D
DP1058.01	500mm	517mm	70mm	17mm



## Available Finishes:



Dark Bronze Waxed DBZW



Polished Bronze Waxed PBW



Polished Chrome PC



Polished Nickel PN



Brushed Brass Waxed BBW



Brushed Nickel BN



Mid Antique Brass Waxed MABW

## Related Products:



CH1072: 'Ashworth' Solid Brass Cabinet Handle

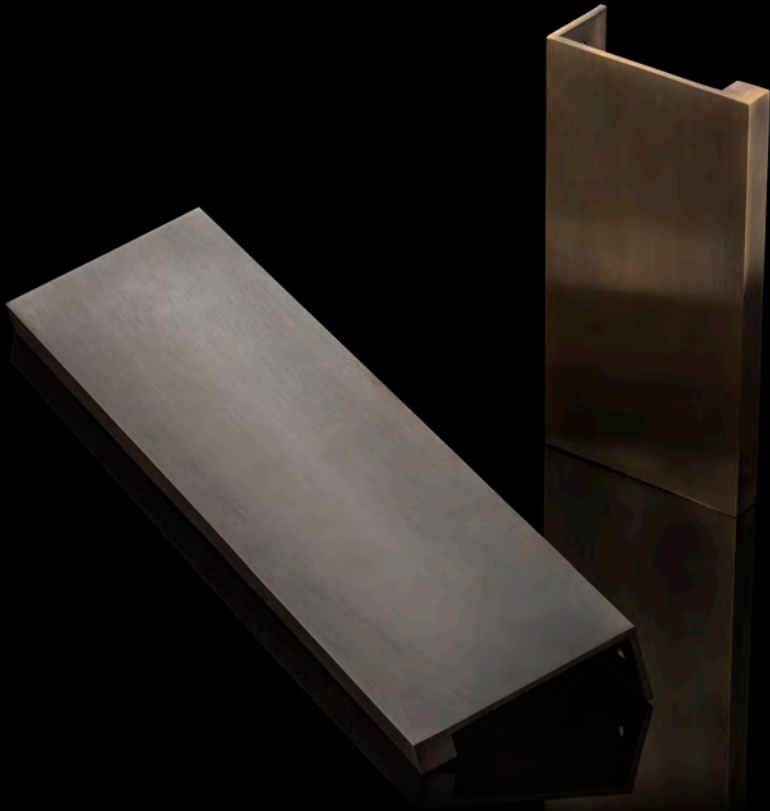


LV1094: 'Ashworth II' Solid Brass Lever Handle



LV1086: 'Ashworth' Solid Brass Lever Handle

JOSEPH GILES



EP1002  
'Cube' Solid Brass  
Large Edge Pull

---

# EP1002 'Cube' Solid Brass Large Edge Pull

JOSEPH GILES

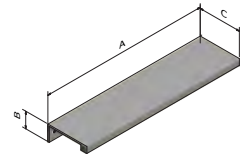
The Cube range was conceptualised almost two decades ago with the EP1003 solid brass edge pull being the first which was swiftly followed by the EP1006; a larger version designed for bigger doors. The range was designed and developed in response to a gap in the market for architects, who, at the time, couldn't find contemporary ironmongery that was both beautiful and practical to suit their design schemes.

The Cube was one of our first major product designs, nothing like this had previously existed and its success gave us the confidence in our ability to design and experiment with different materials and styles. Whilst there have been many imitations of the Cube, we are proud to say that it is truly ours and is ingrained into our history.



## Dimensions:

Code	A	B	C
EP1002.01	150mm	30mm	77mm
EP1002.02	300mm	30mm	77mm
EP1002.04	500mm	30mm	77mm
EP1002.06	1000mm	30mm	77mm



## Available Finishes:



*Dark Bronze Waxed DBZW*



*Polished Bronze Waxed PBW*



*Polished Chrome PC*



*Polished Nickel PN*



*Brushed Brass Waxed BBW*



*Brushed Nickel BN*



*Mid Antique Brass Waxed MABW*

## Related Products:



EP1003: 'Cube' Solid Brass Small Edge Pull

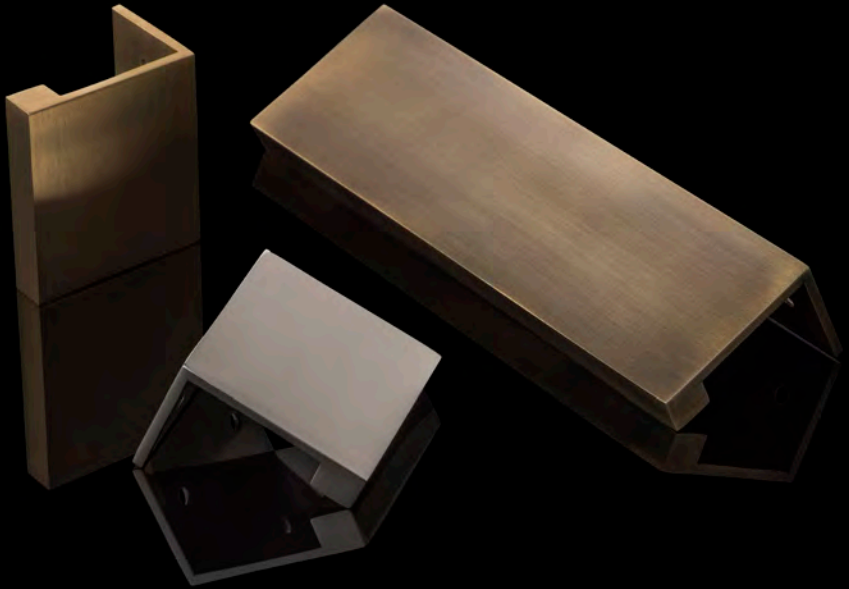


CH1008: 'Cube' Solid Brass Cabinet Handle



CP1084: 'Cube' Solid Brass Drop Cabinet Pull

JOSEPH GILES



## EP1003 'Cube' Solid Brass Small Edge Pull

---



## EP1003

### 'Cube' Solid Brass Small Edge Pull



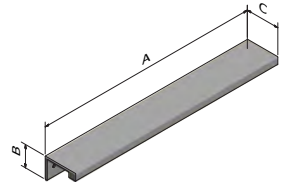
The Cube range was conceptualised almost two decades ago with the EP1003 solid brass edge pull being the first which was swiftly followed by the EP1006; a larger version designed for bigger doors. The range was designed and developed in response to a gap in the market for architects, who, at the time, couldn't find contemporary ironmongery that was both beautiful and practical to suit their design schemes.

The Cube was one of our first major product designs, nothing like this had previously existed and its success gave us the confidence in our ability to design and experiment with different materials and styles. Whilst there have been many imitations of the Cube, we are proud to say that it is truly ours and is ingrained into our history.

The Cube collection remains one of our most popular products and is a testament to our understanding of classic contemporary design. Over the years the range expanded to include lever handles, cabinet pulls and the ever-popular edge pulls.

#### Dimensions:

Code	A	B	C
EP1003.01	50mm	30mm	45mm
EP1003.10	100mm	30mm	45mm
EP1003.02	150mm	30mm	45mm
EP1003.03	300mm	30mm	45mm
EP1003.04	400mm	30mm	45mm
EP1003.05	500mm	30mm	45mm
EP1003.06	600mm	30mm	45mm
EP1003.07	1000mm	30mm	45mm



#### Available Finishes:



Dark Bronze Waxed DBZW



Polished Bronze Waxed PBW



Polished Chrome PC



Polished Nickel PN



Brushed Brass Waxed BBW



Brushed Nickel BN



Mid Antique Brass Waxed MABW

JOSEPH GILES



EP1005  
'Round' Solid Brass  
Small Edge Pull

---

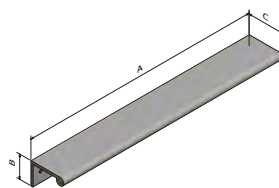
# EP1005 'Round' Solid Brass Small Edge Pull

JOSEPH GILES

Based on our incredibly popular Cube Edge Pull, this design is a more rounded version, which remains one of our most successful contemporary designs. With a smooth, circular curve, the grip on this handle is soft; allowing for a pleasant tactile experience and increased mobility. Simple, understated and the epitome of minimalism, this design is wonderfully versatile and suitable for all our finishes. With a large range of styles available, you can customise your space easily, commanding the simple beauty that the EP1005 emits.

## Dimensions:

Code	A	B	C
EP1005.01	50mm	30mm	45mm
EP1005.10	100mm	30mm	45mm
EP1005.02	150mm	30mm	45mm
EP1005.03	300mm	30mm	45mm
EP1005.04	400mm	30mm	45mm
EP1005.05	500mm	30mm	45mm
EP1005.06	600mm	30mm	45mm
EP1005.07	1000mm	30mm	45mm



## Available Finishes:



Dark Bronze Waxed DBZW



Polished Bronze Waxed PBW



Polished Chrome PC



Polished Nickel PN



Brushed Brass Waxed BBW



Brushed Nickel BN



Mid Antique Brass Waxed MABW

## Related Products:

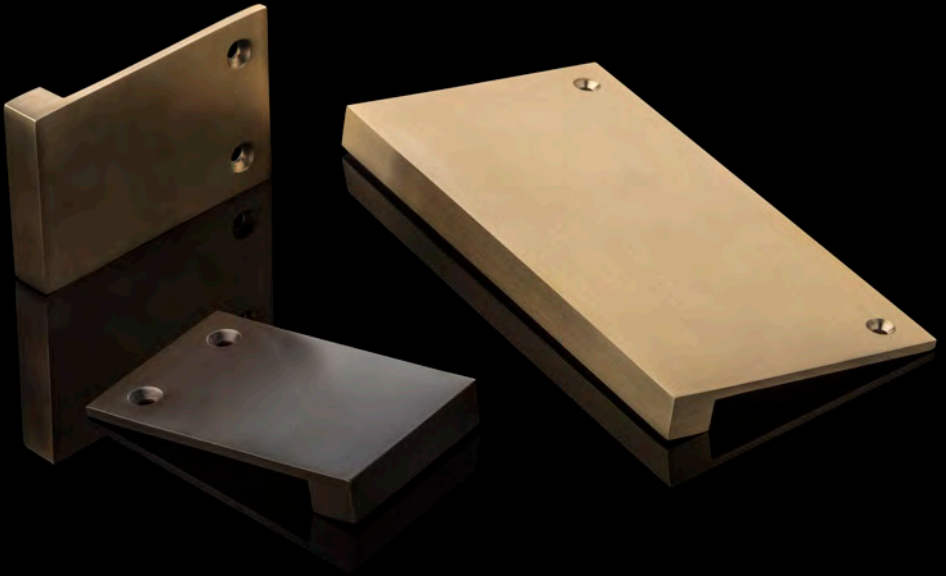


EP1004: 'Round' Solid Brass Large Edge Pull



EP1007: 'Round' Solid Brass Large Edge Pull II

JOSEPH GILES



EP1006  
'Cube' Solid Brass  
Large Edge Pull II

---

# EP1006 'Cube' Solid Brass Large Edge Pull II

JOSEPH GILES

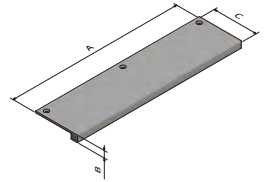
The Cube range was conceptualised almost two decades ago with the EP1003 solid brass edge pull being the first which was swiftly followed by the EP1006; a larger version designed for bigger doors. The range was designed and developed in response to a gap in the market for architects, who, at the time, couldn't find contemporary ironmongery that was both beautiful and practical to suit their design schemes.

The Cube was one of our first major product designs, nothing like this had previously existed and its success gave us the confidence in our ability to design and experiment with different materials and styles. Whilst there have been many imitations of the Cube, we are proud to say that it is truly ours and is ingrained into our history.



## Dimensions:

Code	A	B	C
EP1006.01	50mm	12mm	77mm
EP1006.02	150mm	12mm	77mm
EP1006.03	300mm	12mm	77mm
EP1006.04	400mm	12mm	77mm



## Available Finishes:



Dark Bronze Waxed DBZW



Polished Bronze Waxed PBW



Polished Chrome PC



Polished Nickel PN



Brushed Brass Waxed BBW



Brushed Nickel BN



Mid Antique Brass Waxed MABW

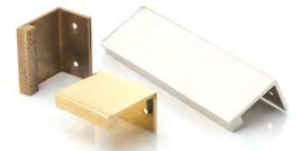
## Related Products:



EP1002: 'Cube' Solid Brass Large Edge Pull



EP1003: 'Cube' Solid Brass Small Edge Pull



EP1012: 'Cube' Solid Brass Small Edge Pull With Intricately Hammered Texture

JOSEPH GILES



LV1003  
'Bailey' Solid Brass  
Door Lever Handle

---

## LV1003

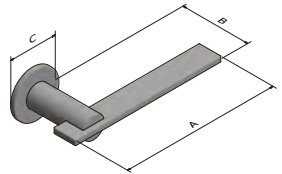
### 'Bailey' Solid Brass Door Lever Handle

The Bailey range was inspired by the London Underground; the illustrious network of subways that allow millions to travel across our grand city every day. The unique feature of our Bailey products is the barred circle design, created by the linear handle merging with the cylindrical base. This is inspired by the London Underground logo, dubbed the "roundel", which employs the same motif. The logo, first conceptualised in 1905, was originally a blue bar over a red disk; made to make passengers aware of the station name. Over the years, the logo has undergone some minor changes, but remains largely the same; a testament to its iconic design. The vast expanse of routes, all with their own colour, is an example of a sublime form of organised chaos; each commuter knowing their direction and place within it. Add a touch of this unconventional harmony into your space with the enticing Bailey range.

The 'Bailey' door lever handles are made from finest grade solid brass and are hand finished in all the standard Joseph Giles finishes. Our lever handles come with a 10-year mechanical guarantee.

#### Dimensions:

Code	A	B	C
LV1003.01	170mm	76mm	52mm



#### Available Finishes:



*Dark Bronze Waxed DBZW*



*Polished Bronze Waxed PBW*



*Polished Chrome PC*



*Polished Nickel PN*



*Brushed Brass Waxed BBW*



*Brushed Nickel BN*



*Mid Antique Brass Waxed MABW*

#### Related Products:



DP1002: 'Bailey' Solid Brass Door Pull Handle



CH1002: 'Bailey' Solid Brass Cabinet Handle

JOSEPH GILES



LV1005  
'Wedge' Solid Brass  
Lever Handle

---



## LV1005

### 'Wedge' Solid Brass Lever Handle

Our Wedge design was inspired by a true British icon, the Jaguar E type. Globally renowned for its beautiful aesthetic, power and luxurious experience, this classic car, whilst manufactured in the 60s and 70s remains recognised as one of the most beautiful cars of all time.

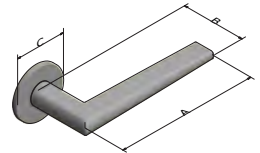
The Wedge pays homage to the chrome trim on the Jaguar, which perfectly accentuates the contours of the car. We took this inspiration and applied it to door furniture. Each piece is tactile and designed for fluidity and function, complementing and accentuating the features of a beautiful room. And, like the engine of a fine car, our products are designed to go the distance. Made from the finest grade solid brass, the Wedge range will last a lifetime.

This collection is available in a range of sizes and all our standard finishes.



#### Dimensions:

Code	A	B	C
LV1005.01	144mm	66mm	52mm



#### Available Finishes:



Dark Bronze Waxed DBZW



Polished Bronze Waxed PBW



Polished Chrome PC



Polished Nickel PN



Brushed Brass Waxed BBW



Brushed Nickel BN

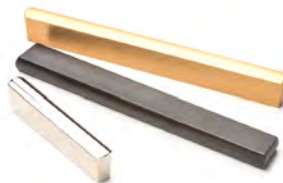


Mid Antique Brass Waxed MABW

#### Related Products:



LV1124: 'Wedge II' Solid Brass Lever Handle



CH1086: 'Wedge' Solid Brass Cabinet Handle



CP1121: 'Wedge' Solid Brass Cabinet Pull

JOSEPH GILES



LV1045  
'Fonteyn' Solid Brass  
Lever Handle

---

## LV1045

### 'Fonteyn' Solid Brass Lever Handle

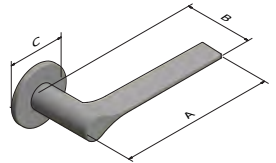
Inspired by the elegant touches of a bygone era, the slender form of the Fonteyn Lever Handle is uniquely distinctive. Thoroughly modern in concept, its quality and simplicity allow it to have a design that will endure. The handles are made from the finest grade solid brass and have are available in all our signature brass finishes.

The Fonteyn design is inspired by the iconic Margot Fonteyn, a beautiful and graceful ballerina who performed for the Royal Ballet. Her supreme command of ballet earned her the status of Prima Ballerina Absoluta, as appointed by the Queen; cementing her as an icon of elegance and agility. And like that of a ballerina, the Fonteyn collection is finely balanced, elegant and truly something to behold.



#### Dimensions:

Code	A	B	C
LV1045.01	140mm	62mm	52mm



#### Available Finishes:



*Dark Bronze Waxed DBZW*



*Polished Bronze Waxed PBW*



*Polished Chrome PC*



*Polished Nickel PN*



*Brushed Brass Waxed BBW*



*Brushed Nickel BN*



*Mid Antique Brass Waxed MABW*

#### Related Products:



LV1126: 'Fonteyn II' Solid Brass Lever Handle

JOSEPH GILES



LV1047  
'Rolled & Hammered'  
Solid Brass Lever Handle

---

# LV1047

## 'Rolled & Hammered' Solid Brass Lever Handle

JOSEPH GILES

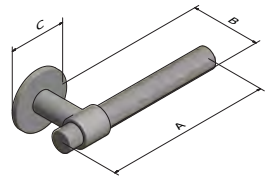
The Rolled and Hammered collection is created by hand, manually turning and hammering the metal to achieve this beautiful and tactile finish.

Over the last few years we have been designing and refining our collections; our designs conform to the typical lever handle shape, however, have beautiful embellishments on the tips to add interest. The rising popularity of these designs inspired the hammered and rolled design, as we asked; what else could be changed to achieve a completely different look? Various ideas were tried and tested over the years, some of which made it into our standard collections, however, the Rolled and Hammered range is a real showstopper. The pieces are crafted by true artisans, hammered and rolled using traditional blacksmith techniques in small forges. Each piece will have its own unique markings, which we believe only adds to its beauty and charm.



### Dimensions:

Code	A	B	C
LV1047.01	151mm	64mm	52mm



### Available Finishes:



*Dark Bronze Waxed DBZW*



*Polished Bronze Waxed PBW*



*Polished Chrome PC*



*Polished Nickel PN*



*Brushed Brass Waxed BBW*



*Brushed Nickel BN*



*Mid Antique Brass Waxed MABW*

### Related Products:



CH1012: 'Rolled & Hammered' Solid Brass Cabinet Handle



CP1100: 'Rolled & Hammered' Solid Brass Cabinet Pull



DP1055: 'Rolled & Hammered' Solid Brass Door Pull Handle

JOSEPH GILES



LV1050  
'Dewhurst I' Solid Brass  
Lever Handle

---

## LV1050

### 'Dewhurst I' Solid Brass Lever Handle

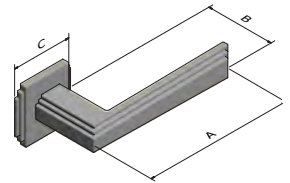
The Dewhurst Range is inspired by the glitz and glamour of Manhattan circa the 1920s, when art deco reigned. We wanted to capture the extravagance of a fizzing bottle of champagne, the blaring sound of a saxophone, or a beautiful beaded flapper dress, and condense it into fine design that evokes nostalgia. And so, as a member of this range, the Dewhurst I Lever handle follows suit. With art deco motifs, such as the cascading solid brass that creates texture and aesthetic, and the beautiful stepped rose it rests on, the handle creates harmony in your space similar to the melody of a jazz song. Bold and refined, this piece is perfect for creating a statement that will hit all the right notes in your home.

The 'Dewhurst I' door lever handles are made from finest grade solid brass and are hand finished in all the standard Joseph Giles finishes. Our lever handles come with a 10-year mechanical guarantee.



#### Dimensions:

Code	A	B	C
LV1050.01	145mm	66mm	54mm



#### Available Finishes:



*Dark Bronze Waxed DBZW*



*Polished Bronze Waxed PBW*



*Polished Chrome PC*



*Polished Nickel PN*



*Brushed Brass Waxed BBW*



*Brushed Nickel BN*



*Mid Antique Brass Waxed MABW*

#### Related Products:



DP1019: 'Dewhurst' Solid Brass Door Pull Handle



SF1013: 'Dewhurst' Solid Brass Recessed Pull



CP1131: 'Dewhurst II' Solid Brass Cabinet Pull

JOSEPH GILES



LV1052  
'Dewhurst' Solid Brass  
Lever Handle

---



## LV1052

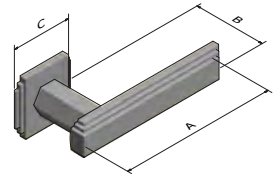
### 'Dewhurst' Solid Brass Lever Handle

The Dewhurst Range is inspired by the glitz and glamour of Manhattan circa the 1920s, when art deco reigned. We wanted to capture the extravagance of a fizzing bottle of champagne, the blaring sound of a saxophone, or a beautiful beaded flapper dress, and condense it into fine design that evokes nostalgia. And so, as a member of this range, the Dewhurst Lever handle follows suit. With art deco motifs, such as the cascading solid brass that creates texture and aesthetic, and the beautiful stepped rose it rests on, the handle creates harmony in your space similar to the melody of a jazz song. Bold and refined, this piece is perfect for creating a statement that will hit all the right notes in your home.

The 'Dewhurst' door lever handles are made from finest grade solid brass and are hand finished in all the standard Joseph Giles finishes. Our lever handles come with a 10-year mechanical guarantee.

#### Dimensions:

Code	A	B	C
LV1052.01	145mm	69mm	54mm



#### Available Finishes:



*Dark Bronze Waxed DBZW*



*Polished Bronze Waxed PBW*



*Polished Chrome PC*



*Polished Nickel PN*



*Brushed Brass Waxed BBW*



*Brushed Nickel BN*



*Mid Antique Brass Waxed MABW*

#### Related Products:



DP1019: 'Dewhurst' Solid Brass Door Pull Handle



SF1013: 'Dewhurst' Solid Brass Recessed Pull



CP1131: 'Dewhurst II' Solid Brass Cabinet Pull

JOSEPH GILES



LV1058  
'Bartlett' Solid Brass  
Lever Handle

---

## LV1058

### 'Bartlett' Solid Brass Lever Handle

The Bartlett family, sharing the same name as the famed Bartlett School of Architecture in London's University College London, was crafted with attention to architecture, fusing traditional concentric patterns with a contemporary cylindrical design. Joseph Giles understands the necessary marrying of form and function, and with this knowledge, created this collection.

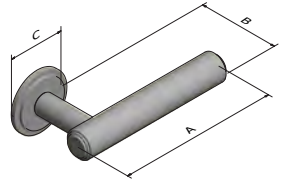
The simple geometry of concentric circles and clean lines are the hallmark of the Bartlett family. The contemporary design will co-ordinate effortlessly across a space for a pleasing, modern aesthetic, with subtle nods to traditional design classics. The beauty of this design is that individual pieces will stand out on their own, or you can combine the collection for a holistic scheme.

We started the collection with this lever handle which was very successful with architect and interior design practices, and so cabinet pulls and a door knob swiftly followed. More recently we've added floor and wall door stops, as well as centre door knobs.

Each piece is made from the finest grade solid brass and hand finished in all our standard finishes.

#### Dimensions:

Code	A	B	C
LV1058.01	146mm	75mm	54mm



#### Available Finishes:



*Dark Bronze Waxed DBZW*



*Polished Bronze Waxed PBW*



*Polished Chrome PC*



*Polished Nickel PN*



*Brushed Brass Waxed BBW*



*Brushed Nickel BN*



*Mid Antique Brass Waxed MABW*

#### Related Products:



CP1004: 'Bartlett' Solid Brass Cabinet Pull



DK1020: 'Bartlett' Solid Brass Door Knob



EP1001: 'Bartlett' Solid Brass Small Round Edge Pull

JOSEPH GILES



LV1060  
‘Theodore’ Solid Brass  
Lever Handle

---

## LV1060

### ‘Theodore’ Solid Brass Lever Handle

Our Theodore collection was inspired by a replica hexagonal pull handle that we produced for a historic public house in London. Parts of the building dated back to the 1900s and while much had changed during this time; the owners wanted to retain as many traditional accents of the building as possible while undertaking a major refurbishment. Inevitably some things were not able to be reused, and so new pieces were required which were sympathetic to the integrity of the building. Joseph Giles was tasked with designing large hexagonal door pulls which paid homage to its roots, but also complemented its new design scheme.

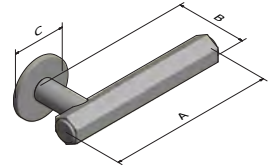
We loved the hexagonal design and felt it would suit a range of design projects. Over the months that followed, we experimented with the shape until we settled on the design; which we named Theodore. Its simplicity ensures all focus is on the shape, which is beautiful, tactile and practical.

The collection includes cabinet handles, lever handles, and more recently cabinet pulls.



#### Dimensions:

Code	A	B	C
LV1060.01	150mm	65mm	52mm



#### Available Finishes:



*Dark Bronze Waxed DBZW*



*Polished Bronze Waxed PBW*



*Polished Chrome PC*



*Polished Nickel PN*



*Brushed Brass Waxed BBW*



*Brushed Nickel BN*



*Mid Antique Brass Waxed MABW*

#### Related Products:



CH1056: ‘Theodore’ Solid Brass Cabinet Handle



CP1081: ‘Theodore’ Solid Brass Cabinet Pull



DP1057: ‘Theodore’ Solid Brass Door Pull Handle

JOSEPH GILES



LV1086  
'Ashworth' Solid Brass  
Lever Handle

---

# LV1086 'Ashworth' Solid Brass Lever Handle

# JOSEPH GILES

The Ashworth collection pays homage to the form and function of the Bauhaus movement. Walter Gropius, the founder of the movement, designed a door handle which epitomised 'Bauhaus' ideologies in the 1920s, and despite being almost 100 years old, remains a popular choice for architects and interior designers alike.

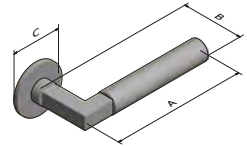
While there have been several replicas of this prestigious design over the years, Joseph Giles wanted to extend the concept further by experimenting with other products and textures. The result of which is the Ashworth collection. As the lever handle design was created by Gropius himself, we wanted to remain faithful to his concept. We have, however, made some aesthetic changes to bring it up to date with current trends, including tweaking the dimensions, materials and offering a variety of finishes.

The cabinet handles are a real triumph; we believe they capture the very essence of the movement, while at the same time evolving the design into other products, which is ideal for bringing a design scheme together. More recently, we have elevated the design further by adding a knurled texture, adding further interest and a more tactile experience. We first introduced this to a cabinet pull, however, due to its growing success, will roll this out to the other products in this range.



## Dimensions:

Code	A	B	C
LV1086.01	144mm	68mm	52mm



## Available Finishes:



*Dark Bronze Waxed DBZW*



*Polished Bronze Waxed PBW*



*Polished Chrome PC*



*Polished Nickel PN*



*Brushed Brass Waxed BBW*



*Brushed Nickel BN*



*Mid Antique Brass Waxed MABW*

## Related Products:



CH1072: 'Ashworth' Solid Brass Cabinet Handle



DP1058: 'Ashworth' Solid Brass Door Pull Handle



CP1108: 'Ashworth' Solid Brass Knurled Cabinet Pull

JOSEPH GILES



LV1096  
'Collett Zarzycki' Solid Brass  
& Marble Lever Handle

---



LV1096

# 'Collett Zarzycki' Solid Brass & Marble Lever Handle

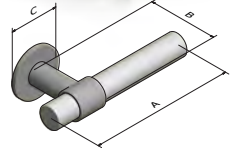
JOSEPH GILES

This exquisite lever handle is a design collaboration with leading Interior Designers Collett Zarzycki. It is made using the finest Italian marbles including Black and Gold Portoro, White Onyx, Red Laguna and Green Guatemala. The marble is secured in place using solid brass, which is available in all our signature finishes.



### Dimensions:

Code	A	B	C
LV1096.01	152mm	73mm	52mm



### Available Finishes:



Dark Bronze Waxed DBZW



Polished Bronze Waxed PBW



Polished Chrome PC



Polished Nickel PN



Brushed Brass Waxed BBW



Brushed Nickel BN



Mid Antique Brass Waxed MABW



Black and Gold Portoro BPM



White Onyx WOM



Green Guatemala GGM



Red Laguna RLM

### Related Products:



DP1050: 'Collett Zarzycki' Solid Brass & Marble Cranked Door Pull



CP1105: 'Collett Zarzycki' T-Bar Solid Brass & Marble Cabinet Pull

JOSEPH GILES



LV1105  
'Harrison' Solid Brass  
Lever Handle

---

## LV1105

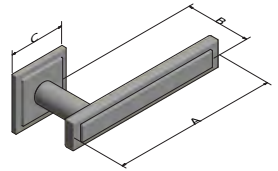
### 'Harrison' Solid Brass Lever Handle

The Harrison range, which features an array of beautifully sturdy and elegant pieces, was first conceived out of a need for a modern deco style; an aesthetic that was in demand, but rare to source in the hardware industry at that time. The coveted contemporary Art Deco style persists to this day, and the Harrison range provides a solution for anyone seeking to add the exuberance of the deco era into their home but with a modern twist. All of the range's items feature smooth, solid surfaces, with a gracefully-cut indentation, creating a textured ridge that is both tactile and attractive. Like the fine-tuning of a jazz solo, the Harrison range adds that perfect note into your space.



#### Dimensions:

Code	A	B	C
LV1105.01	150mm	64mm	52mm



#### Available Finishes:



*Dark Bronze Waxed DBZW*



*Polished Bronze Waxed PBW*



*Polished Chrome PC*



*Polished Nickel PN*



*Brushed Brass Waxed BBW*



*Brushed Nickel BN*



*Mid Antique Brass Waxed MABW*

#### Related Products:



CH1059: 'Harrison' Solid Brass Cabinet Handle



DP1038: 'Harrison' Solid Brass Door Pull Handle



CP1101: 'Harrison' Solid Brass Cabinet Pull

JOSEPH GILES



LV1108  
'Montgomery' Solid  
Brass Lever Handle

---

## LV1108

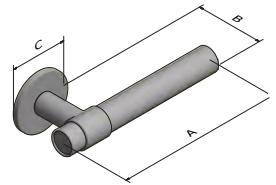
### 'Montgomery' Solid Brass Lever Handle

This handle is inspired by the bar and clasp design; often found on fine jewellery. The bar loops through a circular form, securing the item in place. This is emulated in the handle's design, which features the motif of a bar passing through a circular form on the upper base of the handle. John Harwood, our veteran product designer and director, added his special touch to the product, allowing an indentation at its end, which adds a real flourish to the piece. Once this prototype was formed, it was passed on to our unique workshops in Great Britain to manufacture it in its full glory. With such refined detail, it can fit into any design scheme seamlessly, subtly garnering attention for its beauty. Brushed brass is the most popular for this handle, but will look stunning in any of our finishes.



#### Dimensions:

Code	A	B	C
LV1108.01	151mm	64mm	52mm



#### Available Finishes:



*Dark Bronze Waxed DBZW*



*Polished Bronze Waxed PBW*



*Polished Chrome PC*



*Polished Nickel PN*



*Brushed Brass Waxed BBW*



*Brushed Nickel BN*



*Mid Antique Brass Waxed MABW*

#### Related Products:



CP1111: 'Montgomery' Solid Brass T Bar Cabinet Pulls



CH1079: 'Montgomery' Solid Brass Cabinet Handle

JOSEPH GILES



LV1123  
'Wedge III' Solid Brass  
Lever Handle

---

## LV1123

### 'Wedge III' Solid Brass Lever Handle

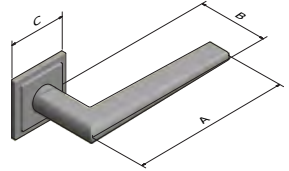
Our Wedge design was inspired by a true British icon, the Jaguar E type. Globally renowned for its beautiful aesthetic, power and luxurious experience, this classic car, whilst manufactured in the 60s and 70s remains recognised as one of the most beautiful cars of all time.

The Wedge pays homage to the chrome trim on the Jaguar, which perfectly accentuates the contours of the car. We took this inspiration and applied it to door furniture. Each piece is tactile and designed for fluidity and function, complementing and accentuating the features of a beautiful room. This is the third of the lever handle designs in this style which has incorporated a squared rose, which creates a perfect balance of contemporary and traditional design. And, like the engine of a fine car, our products are designed to go the distance. Made from the finest grade solid brass, the Wedge range will last a lifetime. This collection is available in a range of sizes and all our standard finishes.



#### Dimensions:

Code	A	B	C
LV1123.01	144mm	68mm	52mm



#### Available Finishes:



Dark Bronze Waxed DBZW



Polished Bronze Waxed PBW



Polished Chrome PC



Polished Nickel PN



Brushed Brass Waxed BBW



Brushed Nickel BN

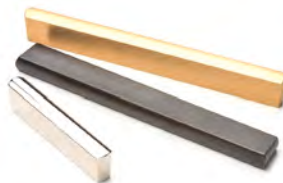


Mid Antique Brass Waxed MABW

#### Related Products:



LV1005: 'Wedge' Solid Brass Lever Handle



CH1086: 'Wedge' Solid Brass Cabinet Handle



CP1121: 'Wedge' Solid Brass Cabinet Pull

JOSEPH GILES



LV1138  
'Alexander II' Solid  
Brass Lever Handle

---



## LV1138

### 'Alexander II' Solid Brass Lever Handle

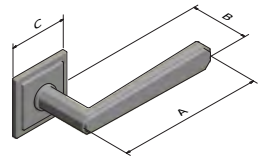
The Alexander Lever Handle is delicately angular, providing straight lines whilst maintaining an element of softness. Carefully designed to ensure even the smallest details are harmonious, it is gently tapered and has a co-ordinating hexagonal shank. Made from solid brass, this lever draws on our rich heritage of designing and engineering exceptional hardware.

The Alexander range is inspired by fine British silverware. The city of Sheffield is famous for its production of cutlery since the 17th century, and as such, fine silverware production remains a part of British history. Like handles, cutlery is a small accent that can pack a punch when manufactured the right way and with fine materials. A fork made out of sterling silver is the perfect accent to any culinary masterpiece, just like a fine handle made out of solid brass is the accent to any beautiful home.



#### Dimensions:

Code	A	B	C
LV1138.01	135mm	57mm	52mm



#### Available Finishes:



*Dark Bronze Waxed DBZW*



*Polished Bronze Waxed PBW*



*Polished Chrome PC*



*Polished Nickel PN*



*Brushed Brass Waxed BBW*



*Brushed Nickel BN*



*Mid Antique Brass Waxed MABW*

#### Related Products:



LV1106: 'Alexander' Solid Brass Lever Handle

JOSEPH GILES



LV1142  
'Montgomery' Solid Brass Lever  
Handle with Knurling Detail

---

LV1142

# 'Montgomery' Solid Brass Lever Handle with Knurling Detail

JOSEPH GILES

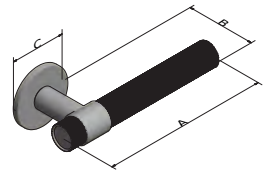
Inspired by the contemporary bar and clasp design, we've added subtle, refined details to elevate our Montgomery Lever Handle into something quite exceptional. With meticulous attention to the smallest details, such as the knurled texture, this handle lends a carefully considered yet wonderfully understated feel to contemporary schemes.

The Knurled Montgomery design was inspired by motorbikes and has a texture that mimics the one found on a bike handle to provide a firm grip and command of the road. Its shape is a bold and sturdy "L" figure, which also copies the contour of a motorbike handle. Like a fine bike, the Montgomery Knurled lever handle will always go the distance; giving you mileage for years to come.



## Dimensions:

Code	A	B	C
LV1142.01	151mm	64mm	52mm



## Available Finishes:



Dark Bronze Waxed DBZW



Polished Bronze Waxed PBW



Polished Chrome PC



Polished Nickel PN



Brushed Brass Waxed BBW



Brushed Nickel BN



Mid Antique Brass Waxed MABW

## Related Products:



CP1107: 'Montgomery' Solid Brass Cabinet Pull With Knurling Detail



CH1075: 'Montgomery' Solid Brass Cabinet Handle With Knurling Detail



CP1111: 'Montgomery' Solid Brass T Bar Cabinet Pulls

JOSEPH GILES



LV1146  
'Doyle' Solid Brass  
Lever Handle

---

## LV1146

### 'Doyle' Solid Brass Lever Handle

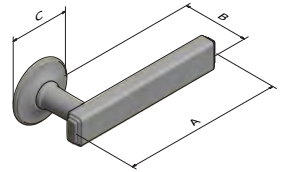
Crafting a beautiful handle with the finest materials: for Joseph Giles, we dare say it's "elementary". The LV1146 is steadfast, resolute and strong; just like the fictional protagonist it's based on, Sherlock Holmes, famed detective. In fact, the handle is named after Sir Arthur Conan Doyle, author of Sherlock Holmes, and famed British physician. First appearing in print in 1887, Conan's Sherlock Holmes depicted a mental fortitude and logic unparalleled by any other detective of the time. At the same time, Victorian-era home fixtures were in vogue under the reign of Queen Victoria. Borrowing fine details from the era, and combining them with a strong and bold shape, we believe that both Conan's work and period are honoured. With a range of fine finishes to choose from and a beautifully accented handle, we believe that even the smallest of details make a vast difference in the home. Or, in the words of Sherlock: "It has long been an axiom of mine that the little things are infinitely the most important."

The 'DOYLE' door lever handles are made from finest grade solid brass and are hand finished in all the standard Joseph Giles finishes. Our lever handles come with a 10-year mechanical guarantee.



#### Dimensions:

Code	A	B	C
LV1146.01	145mm	60mm	54mm



#### Available Finishes:



*Dark Bronze Waxed DBZW*



*Polished Bronze Waxed PBW*



*Polished Chrome PC*



*Polished Nickel PN*



*Brushed Brass Waxed BBW*



*Brushed Nickel BN*



*Mid Antique Brass Waxed MABW*

JOSEPH GILES



# PV1016

## Solid Brass Pivot Hinge For Cabinets

---

## PV1016 Solid Brass Pivot Hinge For Cabinets

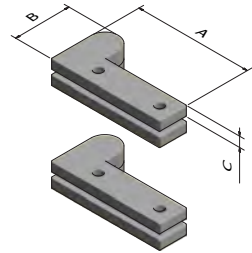
A premium quality offset pivot hinge for cabinet doors, they are available in two sizes for door leaves from 18 – 32mm, and in all our finishes.

Sold as single items with fixings pack.



### Dimensions:

Code	A	B	C
PV1016.03	50mm	24.75mm	4.5mm
PV1016.06	65mm	31.5mm	6mm



### Available Finishes:



*Dark Bronze Waxed DBZW*



*Polished Bronze Waxed PBW*



*Polished Chrome PC*



*Polished Nickel PN*



*Brushed Brass Waxed BBW*



*Brushed Nickel BN*



*Mid Antique Brass Waxed MABW*

JOSEPH GILES



SF104  
Recessed Flush  
Pull Offset

---



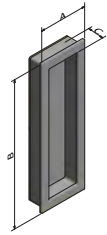
## SF1014 Recessed Flush Pull Offset

The SF1014: A bold, beautiful piece ideal for both sliding and hinged doors. This flush pull, wonderfully angular and sharply-designed, is ideal for a contemporary design scheme, with its versatile form and exceptional function. Made from solid brass, this product is engineered in a way that enables a perfect finish to be achieved both inside and out. And, with our exceptional attention to detail, we have ensured that its recessed form is comfortable for use. Our selection of living finishes allows for a more traditional appeal like the mid-antique brass waxed, or for a contemporary scheme try the polished chrome. Boldly understated, allow the SF1014 to be the key to creating a modern, harmonious, space.



### Dimensions:

Code	A	B	C
SF1014.01	78mm	152mm	19mm
SF1014.02	78mm	300mm	19mm



### Available Finishes:



*Dark Bronze Waxed DBZW*



*Polished Bronze Waxed PBW*



*Polished Chrome PC*



*Polished Nickel PN*



*Brushed Brass Waxed BBW*



*Brushed Nickel BN*



*Mid Antique Brass Waxed MABW*

JOSEPH GILES



SF1049  
Rectangular Solid Brass  
Recessed Pull

---

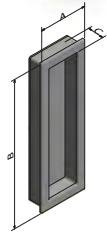
## SF1049

### Rectangular Solid Brass Recessed Pull

This recessed pull has been designed to be used on sliding doors. A minimum door thickness of 44mm is required when fitting two of these products back to back. When fitting these products, they will require bonding.

This product has passed an installation strength test when fitted with Evo-stick mirror adhesive. However Joseph Giles has not tested the combination of this product and these adhesives on every possible door substrate, and in every possible situation, so we would advise you run your own tests before installing this product with any adhesives, including Evo-stick mirror adhesive.

Supplied as single items and available in a range of finishes.



#### Dimensions:

Code	A	B	C
SF1049.01	58mm	175mm	21mm
SF1049.02	58mm	300mm	21mm

#### Available Finishes:



*Dark Bronze Waxed DBZW*



*Polished Bronze Waxed PBW*



*Polished Chrome PC*



*Polished Nickel PN*



*Brushed Brass Waxed BBW*



*Brushed Nickel BN*



*Mid Antique Brass Waxed MABW*

#### Related Products:



SF1050: Rectangular Solid Brass Recessed Pull with Privacy Turn, Emergency Release

SF1017: Solid Brass Pocket Sliding Door End Pull

JOSEPH GILES



SF1050  
Recessed Pull with Privacy  
Turn & Emergency Release

---

# SF1050

## Recessed Pull with Privacy Turn & Emergency Release

JOSEPH GILES

Recessed privacy turn and emergency release, designed for use on sliding doors in bathrooms or WCs. They are supplied with a spindle for a privacy sliding door lock which is operated by the thumbturn on the inside of the door. For emergencies, the door can unlock from the outer side using a coin or screwdriver.

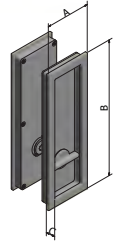
This product is not supplied with a lock, and cannot be used on doors which are less than 44mm thick. These products will require bonding into the door.

This product has passed an installation strength test when fitted with Evo-stick mirror adhesive. Joseph Giles has not tested the combination of this product and adhesives on every possible door substrate, or in every possible situation, and so we recommend you run your own tests before installing this product.



### Dimensions:

Code	A	B	C
SF1050.01	58mm	175mm	13mm
SF1050.02	58mm	300mm	13mm



### Available Finishes:



*Dark Bronze Waxed DBZW*



*Polished Bronze Waxed PBW*



*Polished Chrome PC*



*Polished Nickel PN*



*Brushed Brass Waxed BBW*



*Brushed Nickel BN*



*Mid Antique Brass Waxed MABW*

### Related Products:



SF1049: Rectangular Solid Brass Recessed Pull



SF1017: Solid Brass Pocket Sliding Door End Pull



LA1002: Privacy Sliding Door Hook Lock